

TECH0032 Integrated Datacolor Paintmaker One PC

Note: Datacolor is a registered trademark and Paintmaker is a trademark of Datacolor. Windows is a registered trademark of Microsoft Corporation. ColorPro and ColorPro logo are trademarks of Fluid Management Inc. All other logos, product names, and trademarks mentioned are the property of their respective holders.

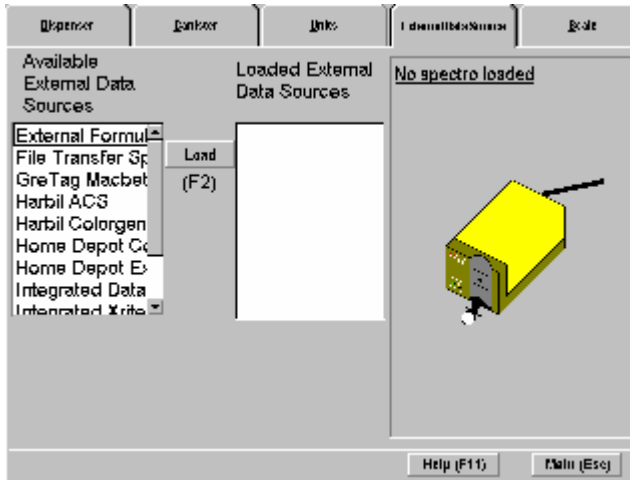
Paintmaker and ColorPro

Paintmaker is Datacolor’s latest color matching software. This document tells you the basic steps for connecting Paintmaker software that is installed on the same PC as the ColorPro software. This is called the integrated software option. With this configuration, the single computer uses com1 to talk to the spectrophotometer and Com2 to talk to the dispenser. If a printer is required, either use a USB printer or additional Com port cards.

Setting ColorPro Settings

Determine the protocol you wish to use.

1. Start ColorPro
2. Click on the Setup button
3. Type in your password and press enter



4. Click on the External Data Source tab
5. Click on the Integrated Datacolor protocol in the Available External Data Source box.
6. Click on the Load button
7. Select the appropriate string format when prompted, click on OK. See TECH0001 for information about string formats. You may need to speak with the customer or salesman to determine the correct settings.

Setting Paintmaker

1. Quit the Paintmaker and ColorPro software
2. Insert the Paintmaker CD into the CD drive of the Paintmaker computer, the CD should Autorun and start setup.
3. Click on change active dispenser.
4. If the CD gives an error message cannot load SHFOLDER.dll just click on ok and ignore it.
5. Click on Harbil/ColorPro option
6. Click on Next button.
7. Click on Harbil/ColorPro (Software to Software)
8. Click on Next Button
9. Start Windows Explorer
10. Open the Paintmaker folder
11. Open the dispense folder
12. Delete doharbil.bat (this batch file is necessary for separate PCs only see TECH0031)

Testing The Connection

1. Start ColorPro
2. Click on the dispense button
3. Click on the external data source tab
4. Press F3 wait for Paintmaker to start
5. Click on Colormatch button.
6. Click on Formula Entry tab.
7. Click on an ingredient.
8. Click on OZ filed.
9. Enter an amount.
10. Click on the dispense button.
11. ColorPro External Data Source tab will appear with the formula transferred..
12. Press F3 to return to Paintmaker
13. Press escape to go to Paintmaker Main screen
14. Minimize Paintmaker to return to ColorPro
15. Press F3 to return to Paintmaker

Trouble Shooting

If no formula is transferred:

1. Go to the Paintmaker software and repeat the steps in Testing the Connection section
2. Start Windows Explorer
3. Open the Paintmaker folder
4. Open the Dispense folder
5. Look for Harbil.dci, if no harbil.dci file contact Datacolor
6. If the file is present, quit ColorPro restart and try again

If you have difficulty getting Paintmaker to start or switching between ColorPro and Paintmaker, try the following:

1. Quit ColorPro
2. Go to Windows Explorer
3. Open the \windows\system\fmplib folder
4. Delete Filemgr.prp
5. Delete Intdatco.prp
6. Restart ColorPro

Verify the following settings in Setup External Data Source, by clicking on the configure button:

Pathname= c:\Paintmkr\dispense\harbil.dci

The Window handle may vary. For Paintmaker latest versions it is just Paintmaker, for older Paintmaker 2000 versions it is Paintmaker 2000, for ICI it is set to Color Key.

You may install SW1257 IntDatCo patch. In this you will be given an ini file with the Window handle. See TECH0126 for details.

Troubleshooting Compatibility problems

ColorPro 3.0 is not compatible with Datacolor's Paintmaker software when both are running on the same computer. Either Paintmaker will not store custom formulas, or ColorPro will not start properly giving an error mentioning escomb32.ocx.

In order to have both applications run on the same system, perform these steps after both programs are installed.

1. Copy c:\windows\system\escomb32.ocx (system32 for Windows 2000 and XP) to C:\ColorPro
2. Create an empty text file in C:\ColorPro named ColorPro.exe.local
3. Run PMMedic.exe in the C:\Paintmkr folder. This runs for one second and exits; no messages are displayed.

NOTE: This solution works for Windows 98 Second Edition, NT 4.0, 2000, and XP.