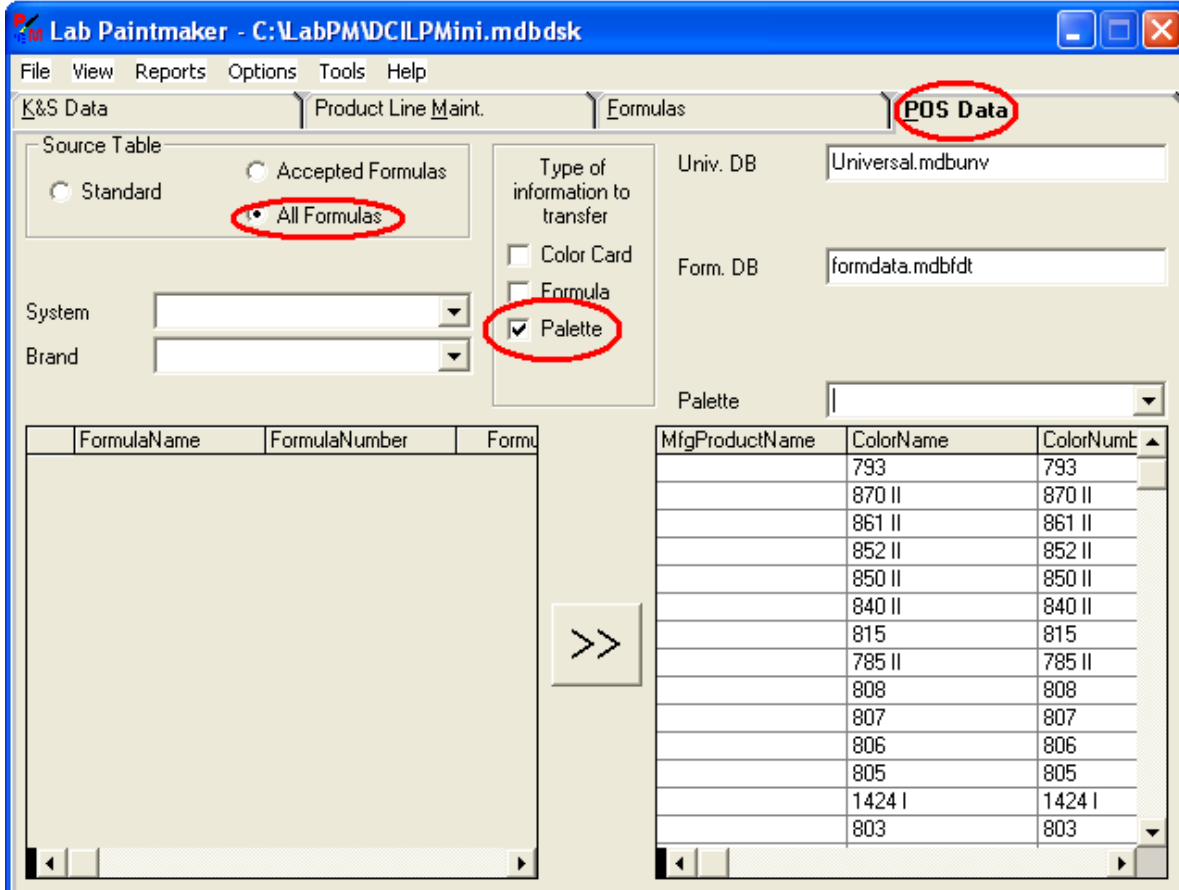


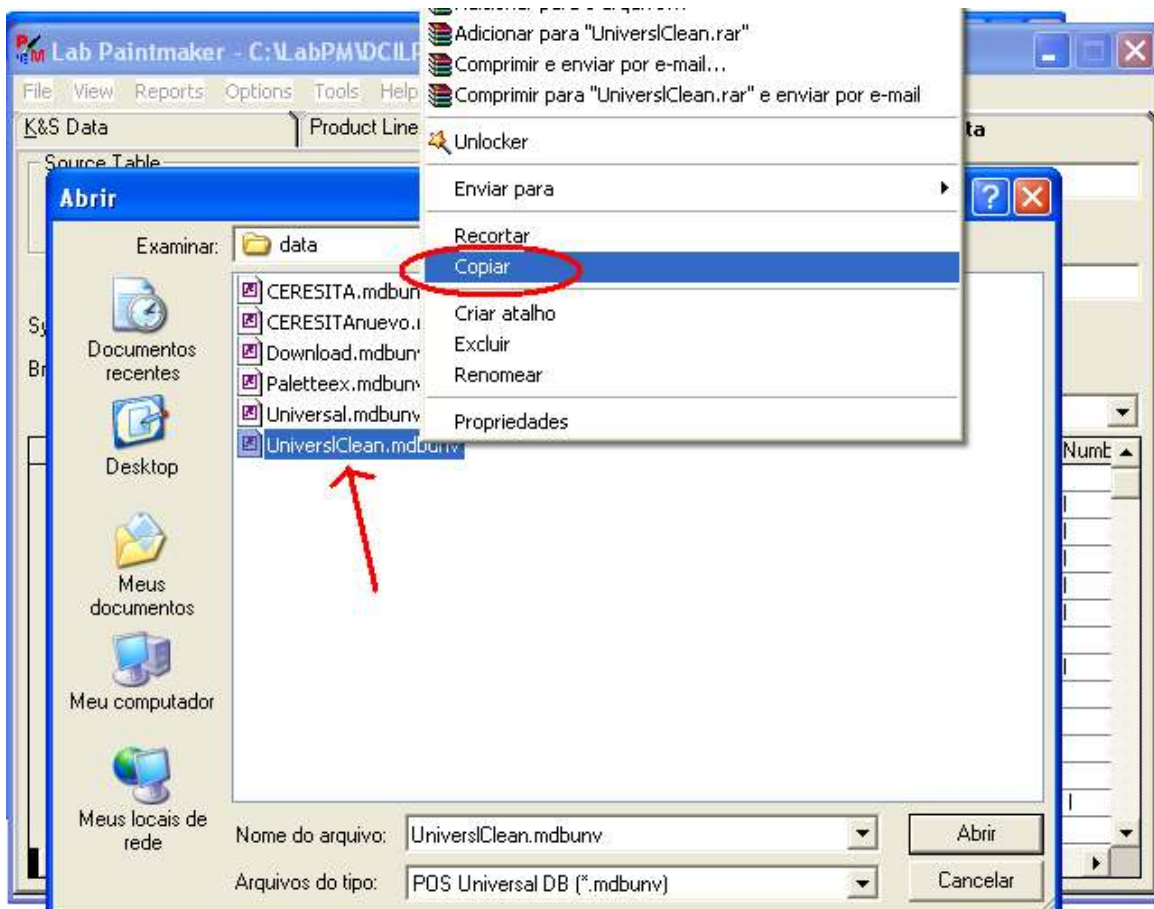
How to Create a Palette in Lab Paintmaker

I. **First step** is to create a palette file from an empty database (universalclean.mdbunv).

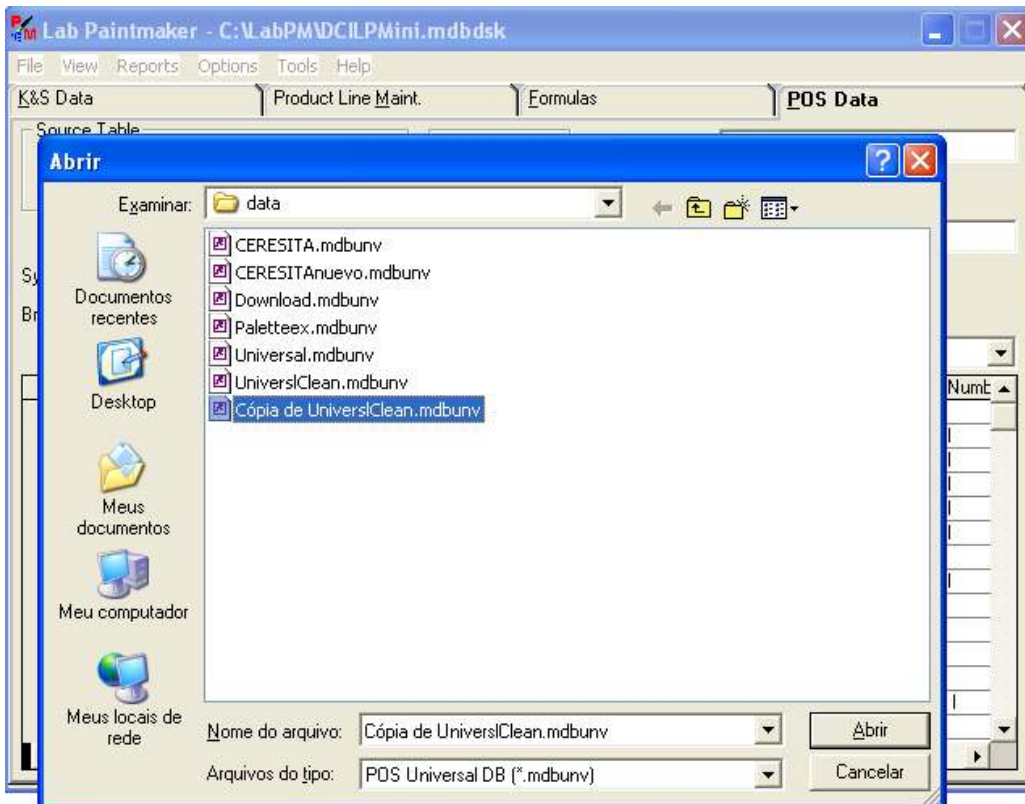
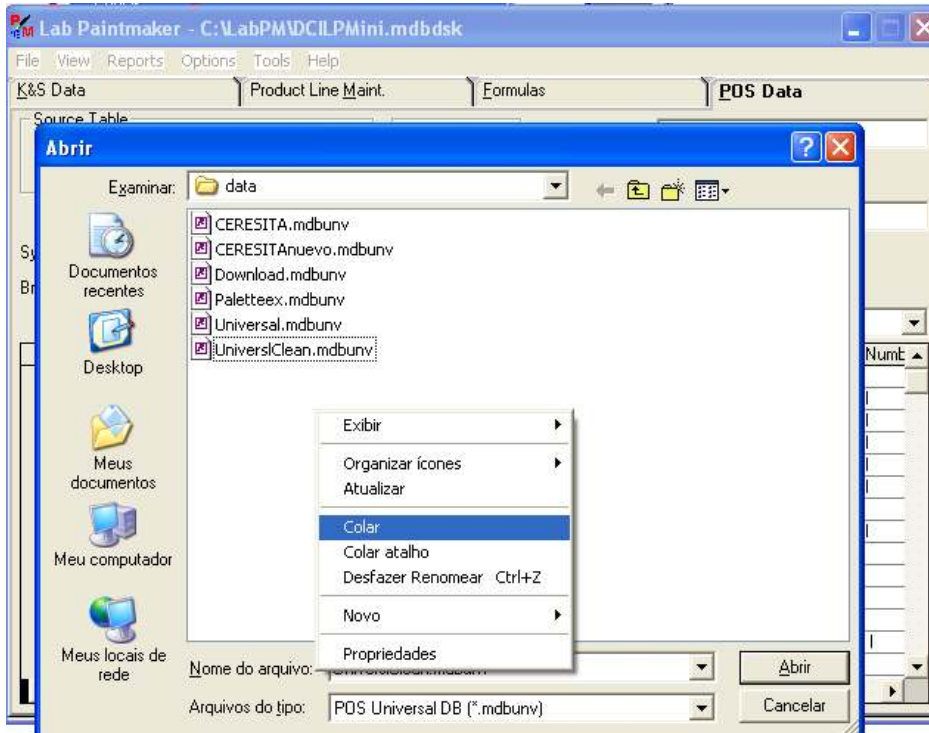
1) Go to POS Data, check “All Formulas”, check “Palette” only and click in the Univ.DB box :



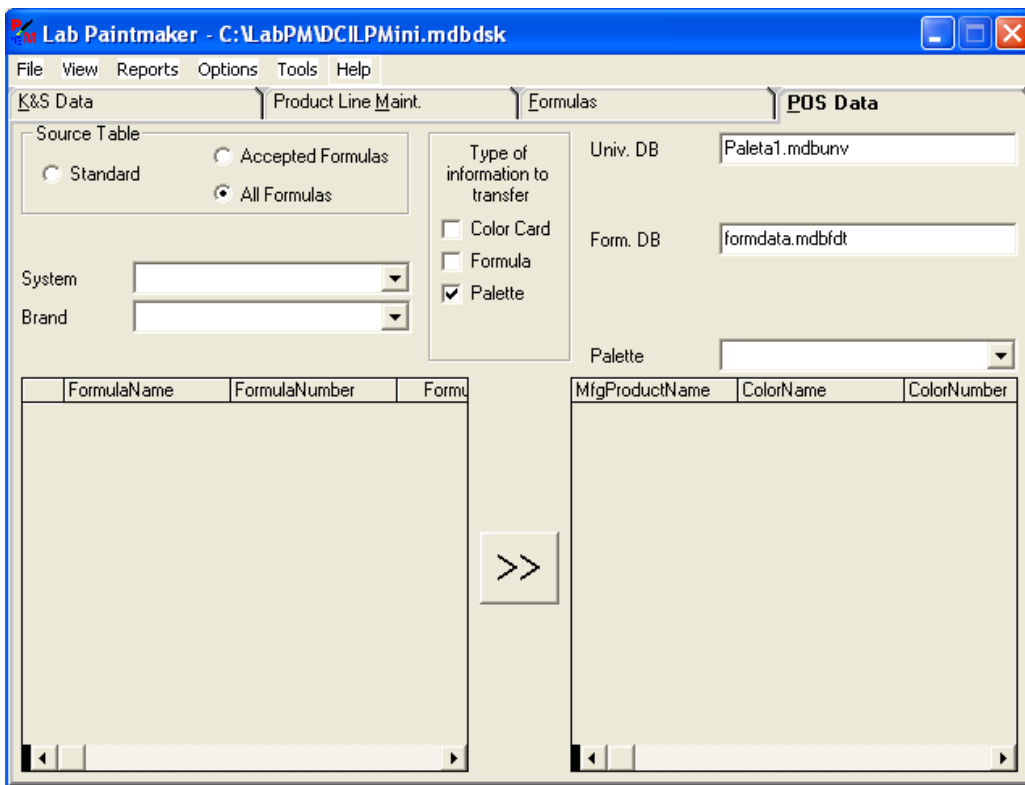
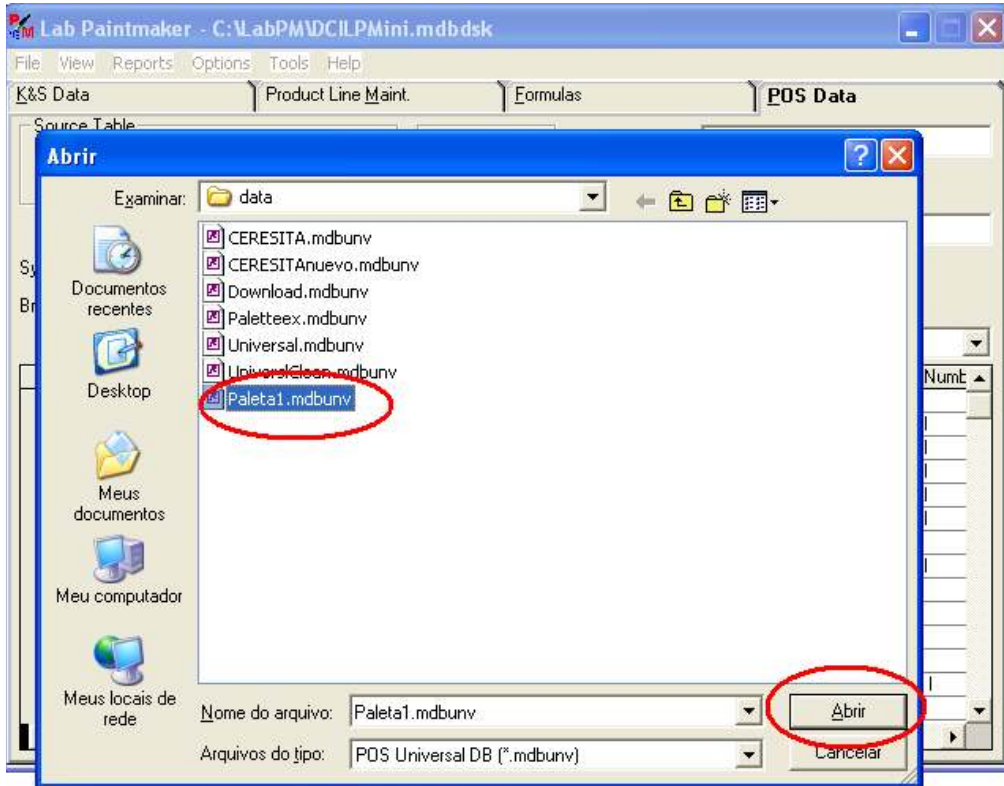
2) Choose the UniversalClean.mdbunv file, right-click on it and copy :



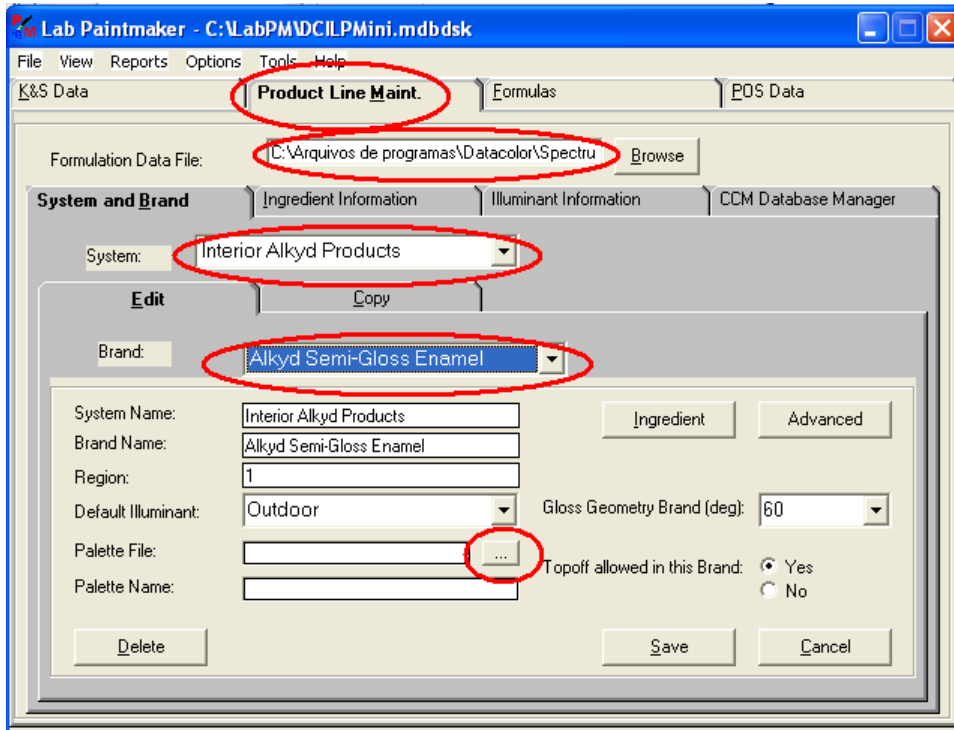
3) Paste it in the same window to create a copy of the UniverslClean.mdbunv file :



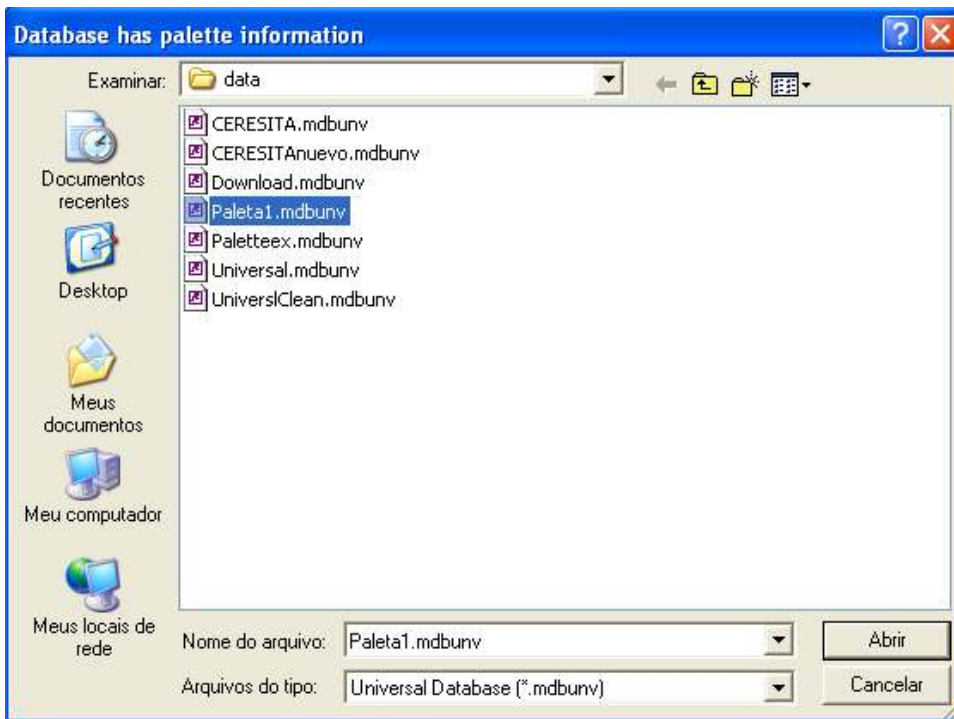
4) Rename the copied file. In this example we renamed it as “Paleta1”. Open the file :



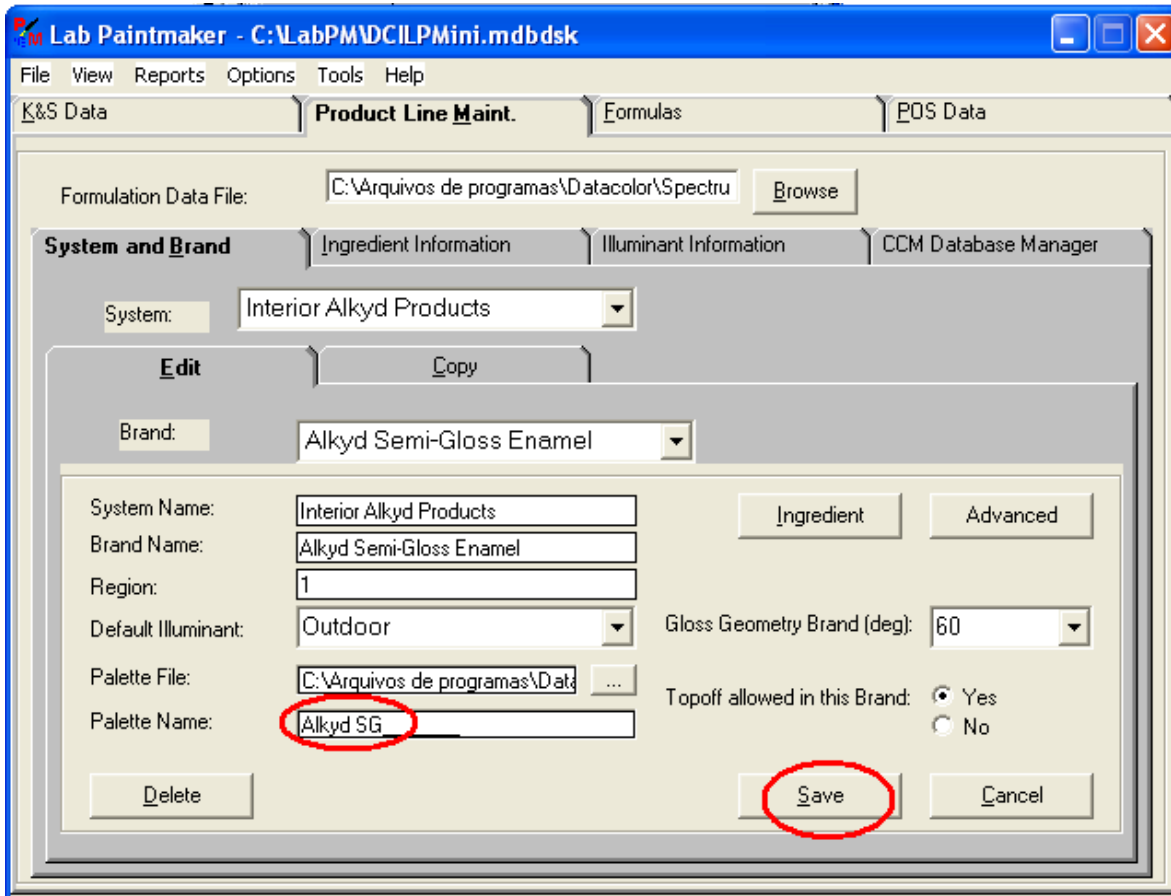
5) Go to Product Line Maintenance, choose the Formulation Data File, system and brand. Click the button beside the Palette File line to choose the palette that you have created and to associate it to this manufacturer and brand :



6) Choose the palette that you have created and click Open :



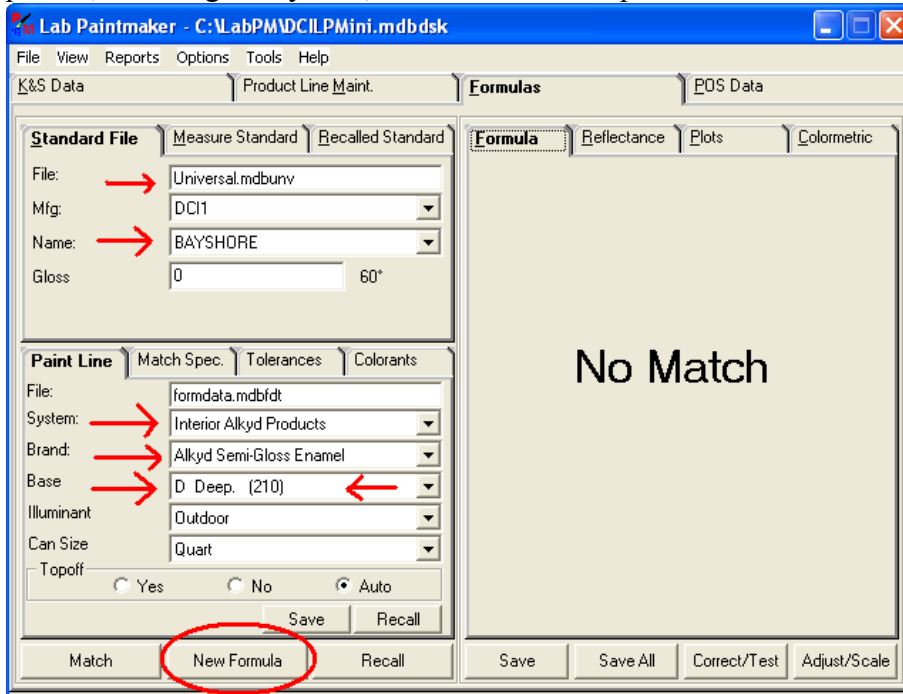
7) In this example I have created a palette named “Alkyd SG”. Click “Save”:



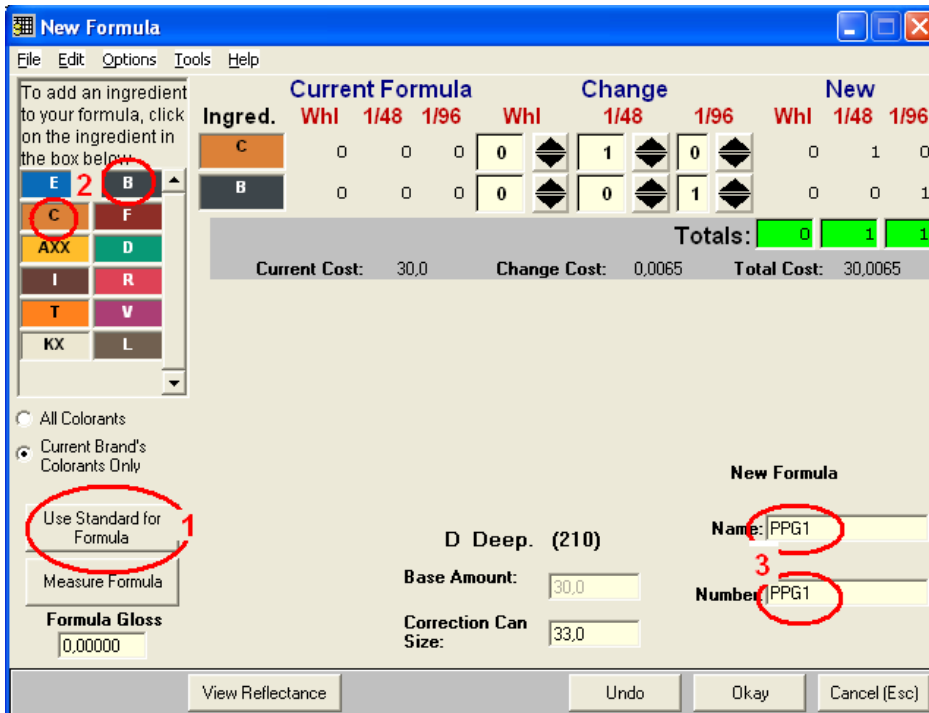
This concludes the creation of a palette. Next steps will show you how to enter known formulas to the palette.

II. To enter known formulas to the palette

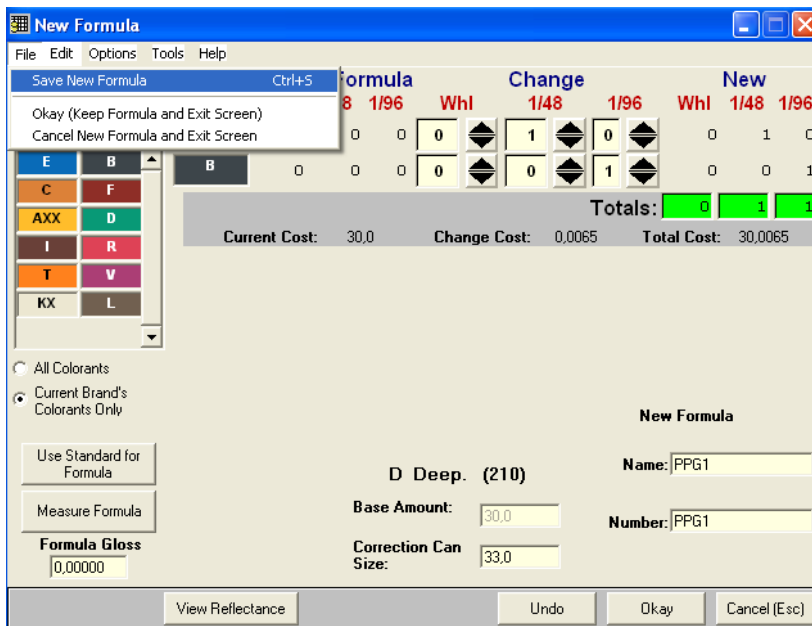
Go to the Formulas menu, choose your color card or measure the color you want to save to the palette, selecting the system, brand and most important the base. Click on “New Formula” :



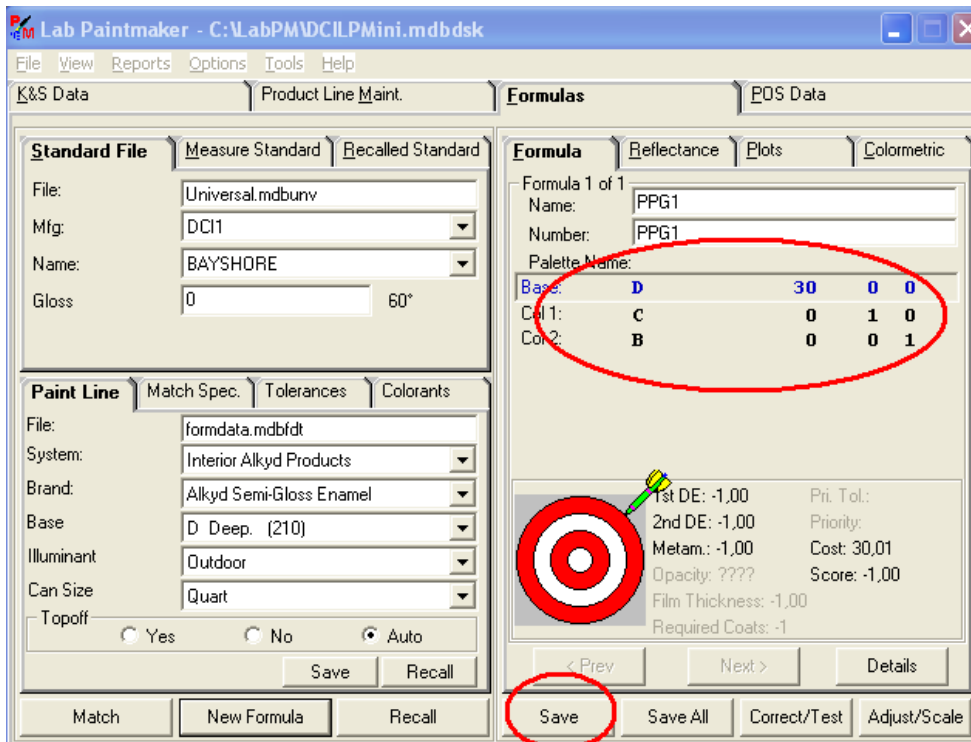
Click first on “Use Standard for Formula”, then choose the formula colorants, enter the amounts and a name and number for the formula:



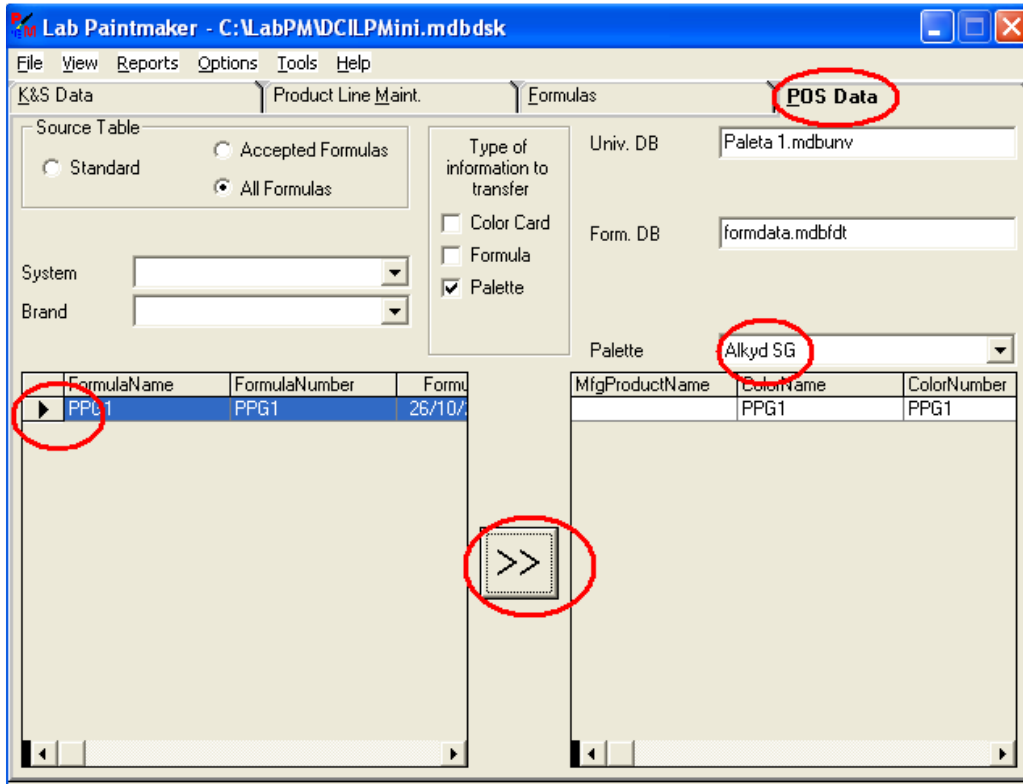
Click on the File menu, then on “Save New Formula” and Okay (right low corner) :



You will be prompted back to the Formula screen. Click the “Save” button :



To send this formula to the palette, go back to the POS Data page, enter the name of the palette you have created in the corresponding field and transfer the formula to the palette :

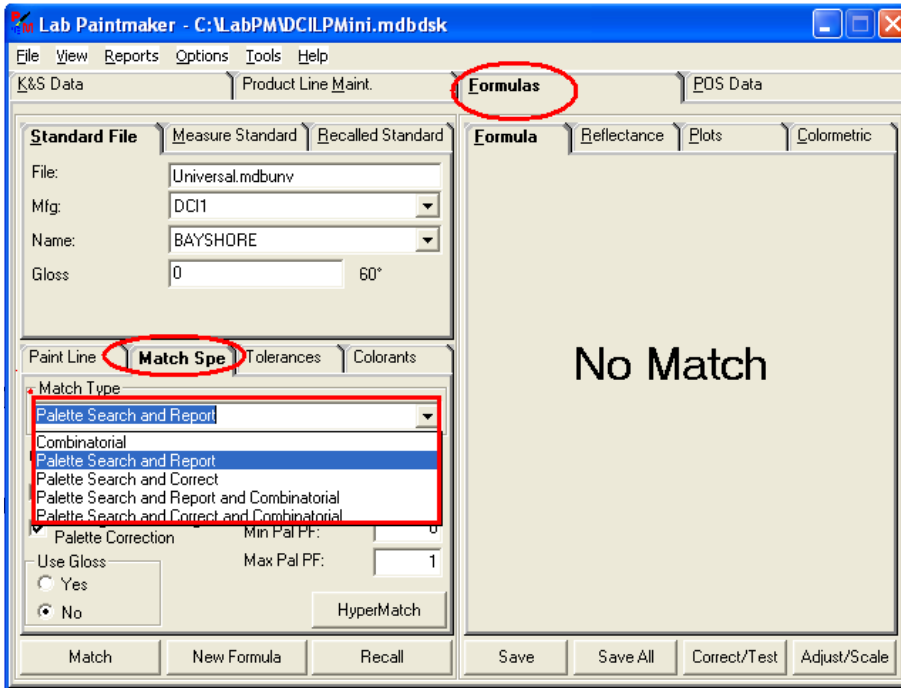


This concludes transferring the formula to the palette. To enter more knowns to the same palette, repeat this procedure starting from page 7 (item II. To enter known formulas to the palette).

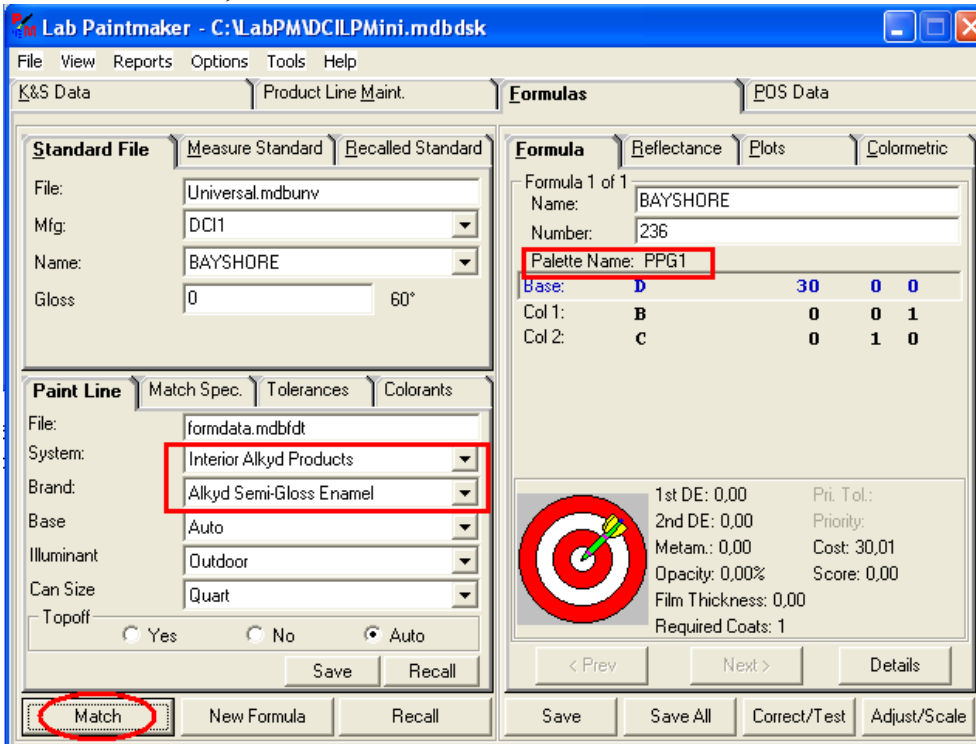
The next steps will show you how to use the palette to match new colors.

III. To match a new color using the palette

Go to the “Formulas” page, choose “Match Specifications” and select any type of matching using the palette (see LabPaintmaker manual for more information):



Select the system and brand to which the palette was created for, measure the color or retrieve it from a color card, then click on “Match” :



In the example above, see that the matched color was found in the palette with the name PPG1, that means that for this new color there is already one existing formula (DE=0.00) that was stored to the system/brand palette. For other ways to enter information to the palette, ask your Datacolor application specialist.