

Formula with PF=100 to deep base (Base INTENSA):

The screenshot shows the Lab Paintmaker software interface with the following configuration:

Standard File

- File: CERESITA.mdbunv
- Mfg: MODA COLOR
- Name: MC 10B-1P
- Gloss: 0 @ 60°

Paint Line

- File: PRUEBAFINAL.mdbfdt
- System: OLEO
- Brand: OLEO MODA COLOR
- Base: BASE INTENSA
- Illuminant: DIA
- Can Size: CUARTO
- Topoff: Yes No Auto

Formulas

Formula 1 of 1

- Name: MC 10B-1P
- Number: MC 10B-1P
- Palette Name:

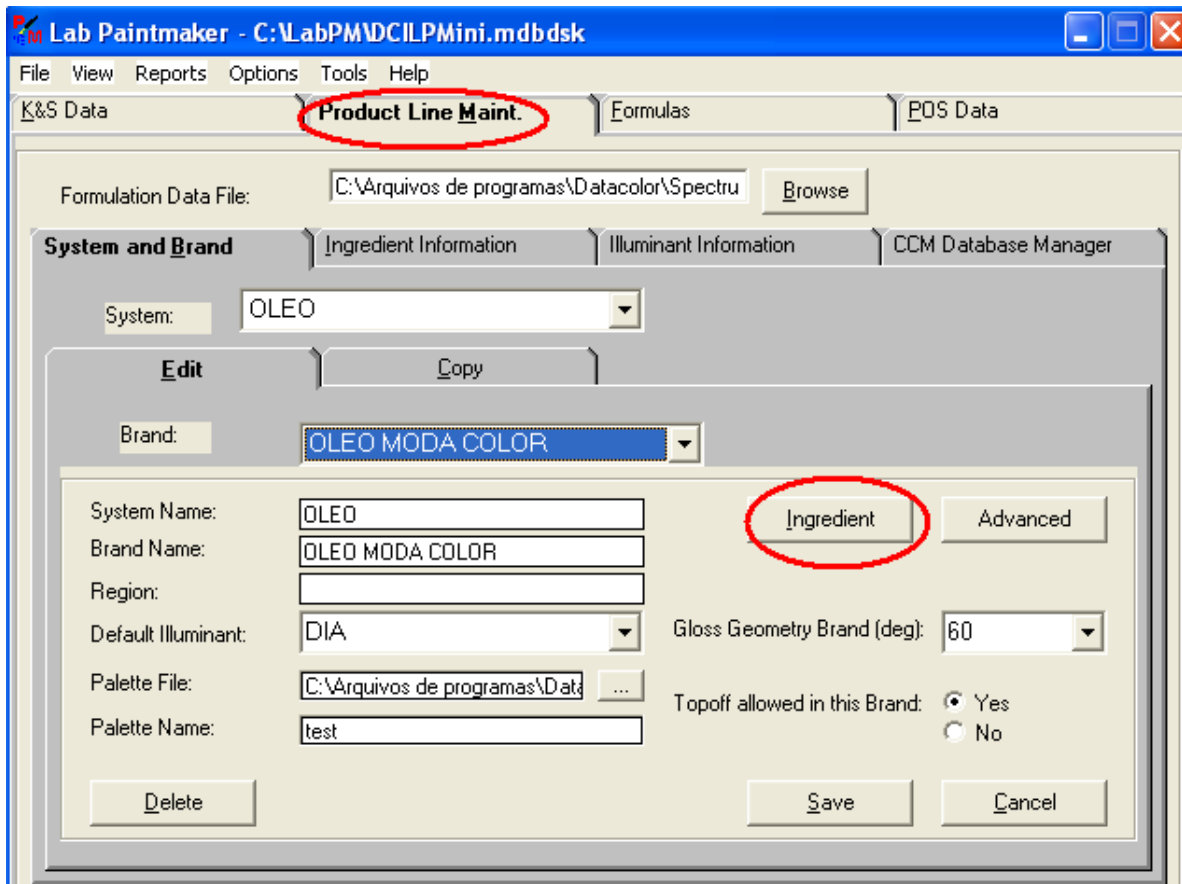
Base:	INTENSA	30	0	0
Col 1:	NE	0	0	1
Col 2:	VI	0	2	0
Col 3:	RO	0	3	0

Target Metrics

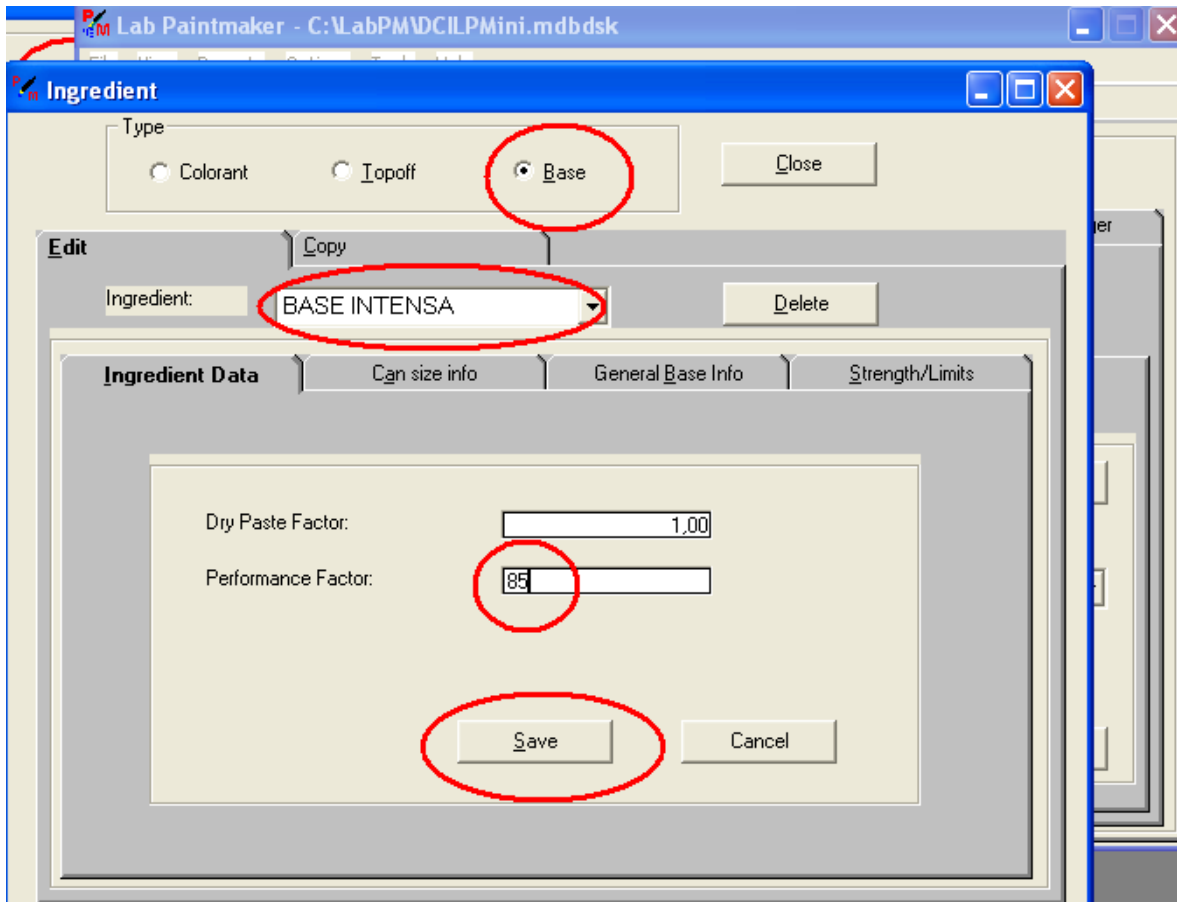
- 1st DE: 0,75
- 2nd DE: 0,88
- Metam.: 0,43
- Opacity: 0,00%
- Film Thickness: -1,00
- Required Coats: 1
- Pri. Tol:
- Priority:
- Cost: 409,15
- Score: 0,97

Buttons: Match, New Formula, Recall, Save, Recall, < Prev, Next >, Details, Save, Save All, Correct/Test, Adjust/Scale

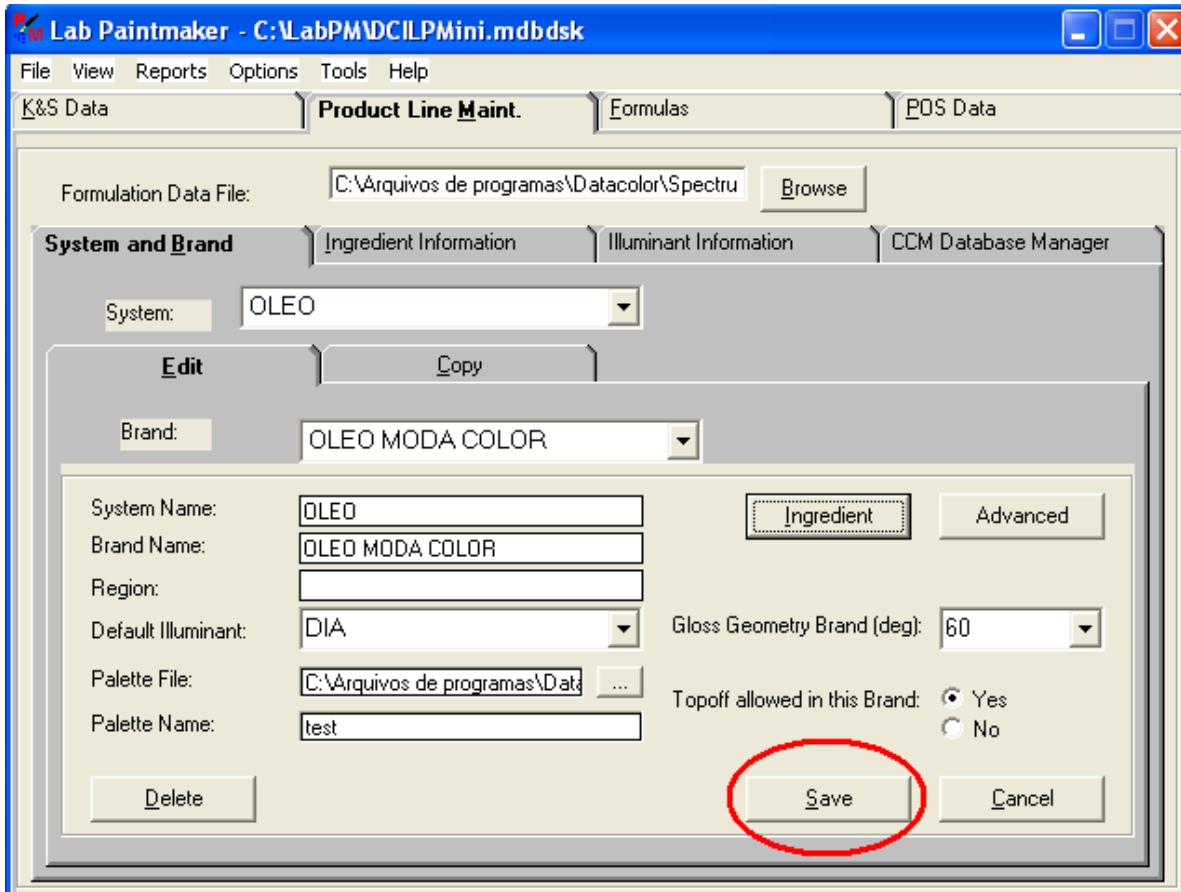
Go to Product Line Maintenance, choose system, brand, etc , and Ingredient :



Select Base, the corresponding base, change the performance factor and save:



Save the formulation data file :



The same standard matched with a PF=85 to the base :

