

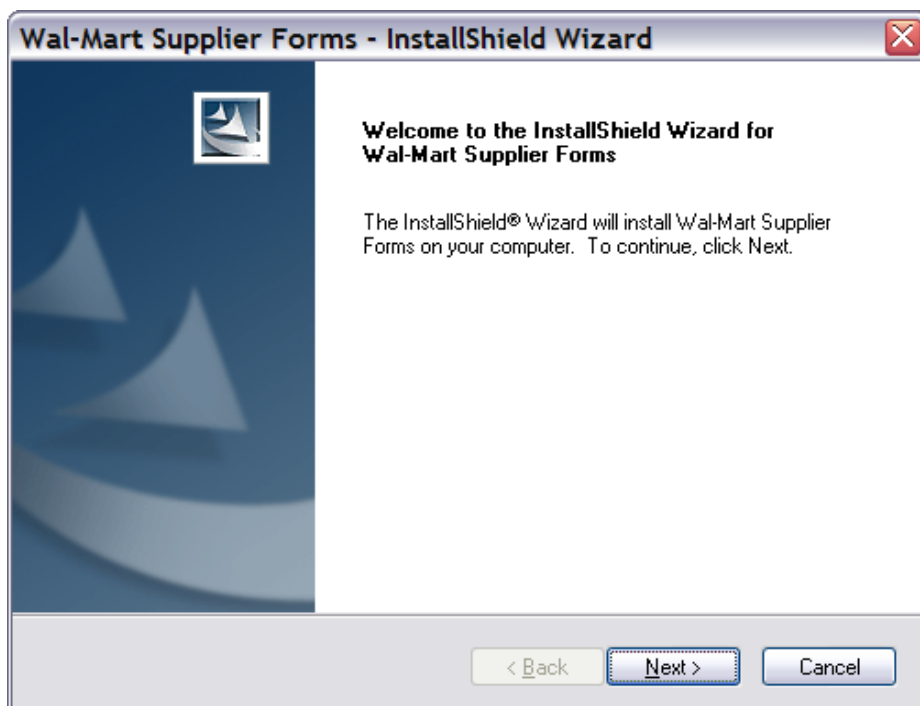
INSTALLATION INSTRUCTIONS for Custom Wal-Mart Datacolor TOOLS Forms

The following instructions are to update your Datacolor TOOLS system to use custom Wal-Mart forms and templates for entry of lab dip and shade band information for Wal-Mart. To install the forms, follow these steps:

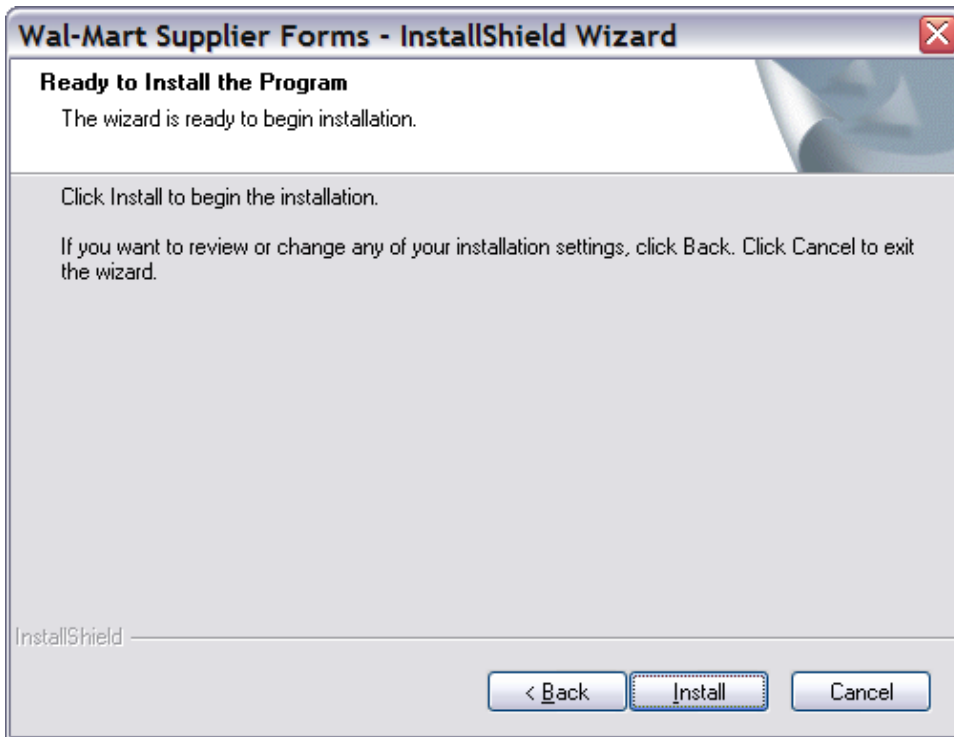
1. If not already installed, first install Datacolor TOOLS according to the installation instructions.
2. If Datacolor TOOLS is currently open, close the application before proceeding to the next step.
3. Open an Internet browser window and enter the following address:

<http://www.datacolor.com/wmforms/downloads>

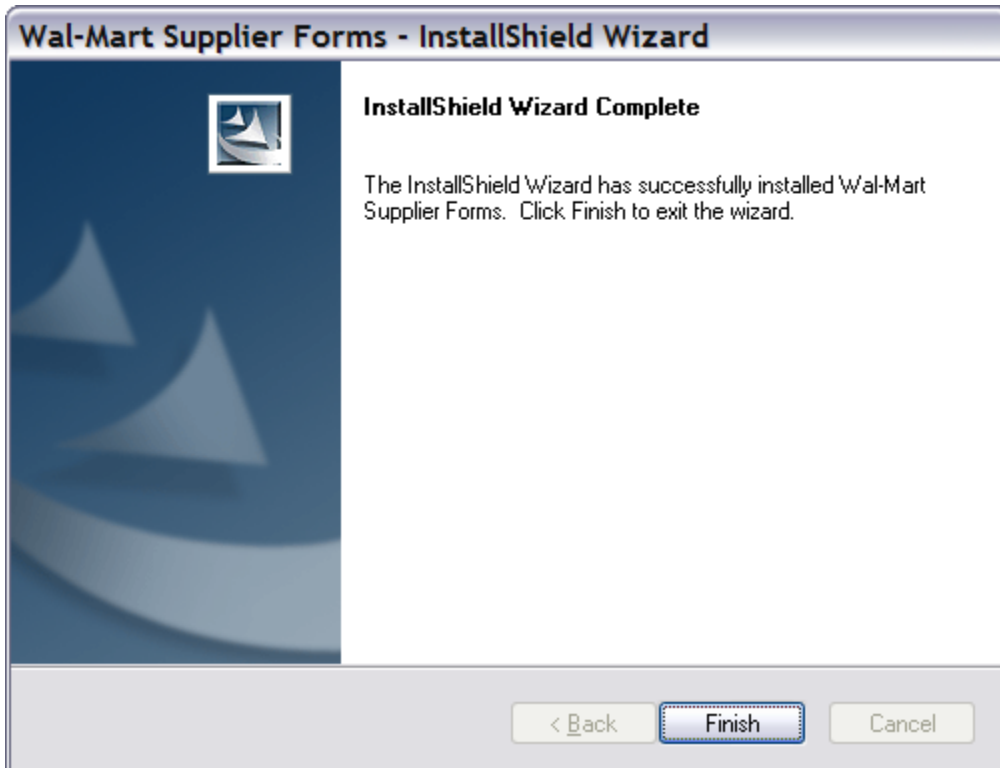
4. Complete the form on the webpage by entering all required information, and then click the "Submit" button at the bottom of the webpage.
5. The download page will be displayed and the download of **WM_Tools_2.1_Zip_Setup.exe** will start automatically. If the download does not start automatically, click on the appropriate link on the webpage to download the file.
6. Either save the **WM_Tools_2.1_Zip_Setup.exe** file to a location on the local system, or install the file immediately.
7. If the **WM_Tools_2.1_Zip_Setup.exe** file is saved to the local system, navigate to that location and double-click the file to begin the installation.
8. The following screen will be displayed. Click "Next" to begin the installation.



9. Click "Install" on the following screen.



10. The following screen will be displayed when the installation is complete. Click "Finish".



11. Click "OK" on the following screen to close the auto-installation file.



12. The custom Wal-Mart forms and templates have now been installed and are ready for use.