

Data Import/Export Wizards

Overview

The Import/Export Wizard provides tools to convert data from other Datacolor programs for use with Datacolor MATCH Pigment, and to distribute data among multiple systems running the suite programs.

Data Conversion

The Import Wizard provides the ability to convert data from a variety of Datacolor programs and distribute the data to multiple locations that run the program. Data from ChromaCalc DOS and Datamatch PPI can be converted for use with Datacolor MATCH Pigment. The data imported can include sample data, formulas, ingredient and colorant data used for color matching.

Data Sharing

This feature allows you to share colorant sets created on different systems. Using the Export Wizard, data from Datacolor MATCH Pigment is exported to an XML file format. It can then be transferred, via email or other computer media, to another system. Once copied onto the new system, you use the "Import Wizard" to import it into the active Datacolor MATCH Pigment database on another system.

364 • Importing Data Datacolor MATCH Pigment

Importing Data

The Import Wizard is used to convert data from Datamatch/PPI or Chroma-Calc Dos for use with Datacolor MATCH Pigment.

Before you Begin

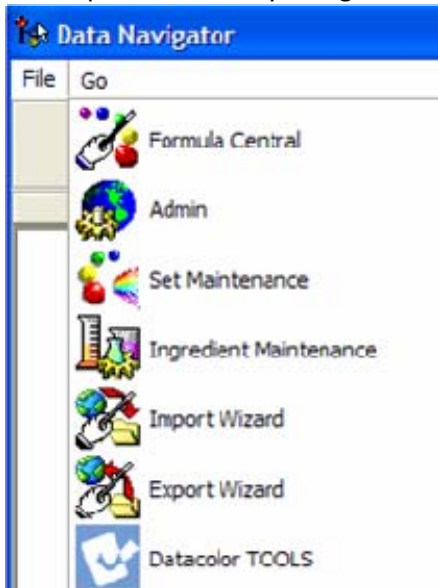
- If you are converting data from Datamatch/PPI, both Datamatch and Datacolor MATCH Pigment must be loaded onto the system.
- The density unit conversion factor used for Datamatch databases equals 1/density. For example, if the weight/volume value for this conversion is 8.33 lbs, the conversion is 1/8.33 or .12.
- To convert colorant sets from Datamatch, you need to know the weight and volume units used in the Datamatch database.

Exporting Data

All data is exported to an XML file format. This format makes the data available for import to other 3rd party software packages.

Import/Export Wizards in Operation

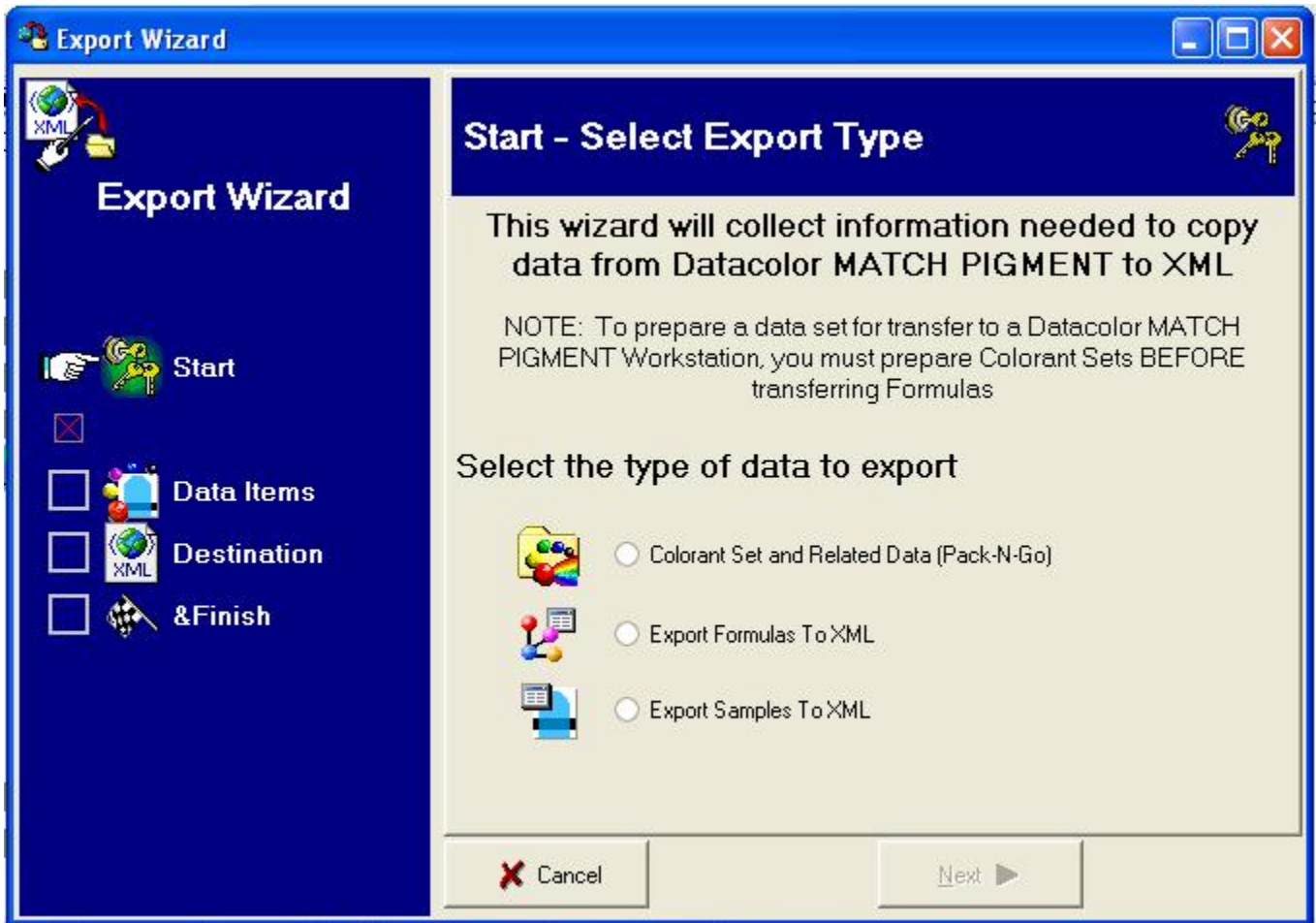
Their operation is fairly straightforward.



From the “Go” menu of Data Navigator select either wizard depending on the direction you want to move data. Export wizard to move data OUT of current database and the import wizard to move data into it.

Depending on configuration you may be required to login to Datacolor MATCH Pigment as use with administrative rights to see these options on the Navigator’s menu. Some product levels do not, by default, included Import / Export on this menu. If you are using a Workstation or multi-user system sharing a database, be sure to check with your system administrator before modifying large amounts of data. It is always a good idea to create a current backup of your database before any import.

This is the export wizard starting screen.



Each of the three options will create an XML formatted file.

The **first step** in using the wizard is to select the type of data to be exported.

Colorant Set – will export one or more colorant set along with ingredient, template and related system data such as formula modes, units...

Formulas – will export one or more color recipes – those formulas that have been saved to Data Navigator folders from Formula Central.

Formulas that are 'in process' and exist only in match jobs will not be available for selection in the list of data items to export.

Samples – will export one or more standards, batches or samples from Data Navigator folders.

During the second step of the wizard, Data Items, users will be able to select the option of having batches automatically included in the export when their related standard is selected.

After selecting the type of data to export, simply press the button “Next.”

In the wizard’s **second step**, users will be prompted to select data items (colorant sets, formulas or samples) from a list.

For samples and formulas, users will be allowed to select any Data Navigator folder to populate the list.

Options may be present to allow showing samples or formulas from subfolders.

Normal windows conventions are used. To select all items in the list, press Ctrl+A. To make a contiguous selection of multiple items, hold the shift key down and click the first and last items. To make a non-contiguous selection, hold the Ctrl key down and click each item.

Once data items are selected, press the button “Next,” to continue or the button, “Back,” to return to the wizard’s first step.

Notice that the user’s progress through the steps will show in the left pane as boxes are checked.

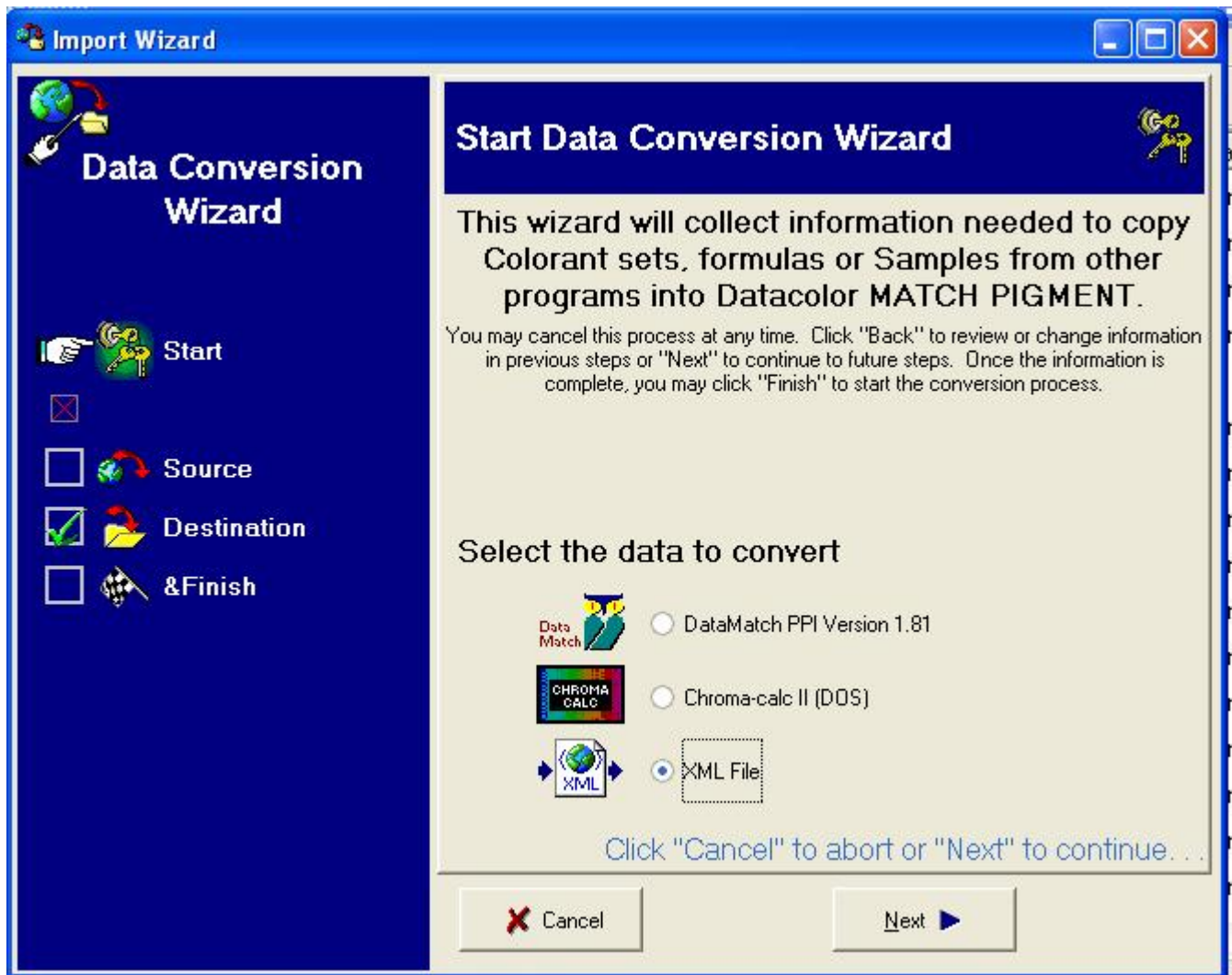
The **third step** is to select a location and a name for the export file. One may select any folder available to the operating system using a standard MS Windows browse dialog. The default location is the “My Documents” folder of the current WINDOWS user.

Once the destination file is defined, press the button “Next,” to continue or the button, “Back,” to return to select different data items.

The wizard’s **final step** is trivial, but gives the user an opportunity to review selections and press the button “Finish” to have the system create the export file. Of course, the buttons, “Back” and “Cancel,” are available should the user wish to return to a previous step or abort the export process entirely.

Once the wizard finishes, the user may find the export file using windows Explorer to copy, email or otherwise transport it to a different Datacolor MATCH PIGMENT system for import.

This is the import Wizard starting screen



This wizard works very much like the export wizard, with buttons for “Next,” “Back,” “Cancel,” and “Finish” and a left pane to indicate one’s progress through the steps.

The option of interest here is “XML File”

Once that selection is made, click the button, “Next” to continue to the second step.

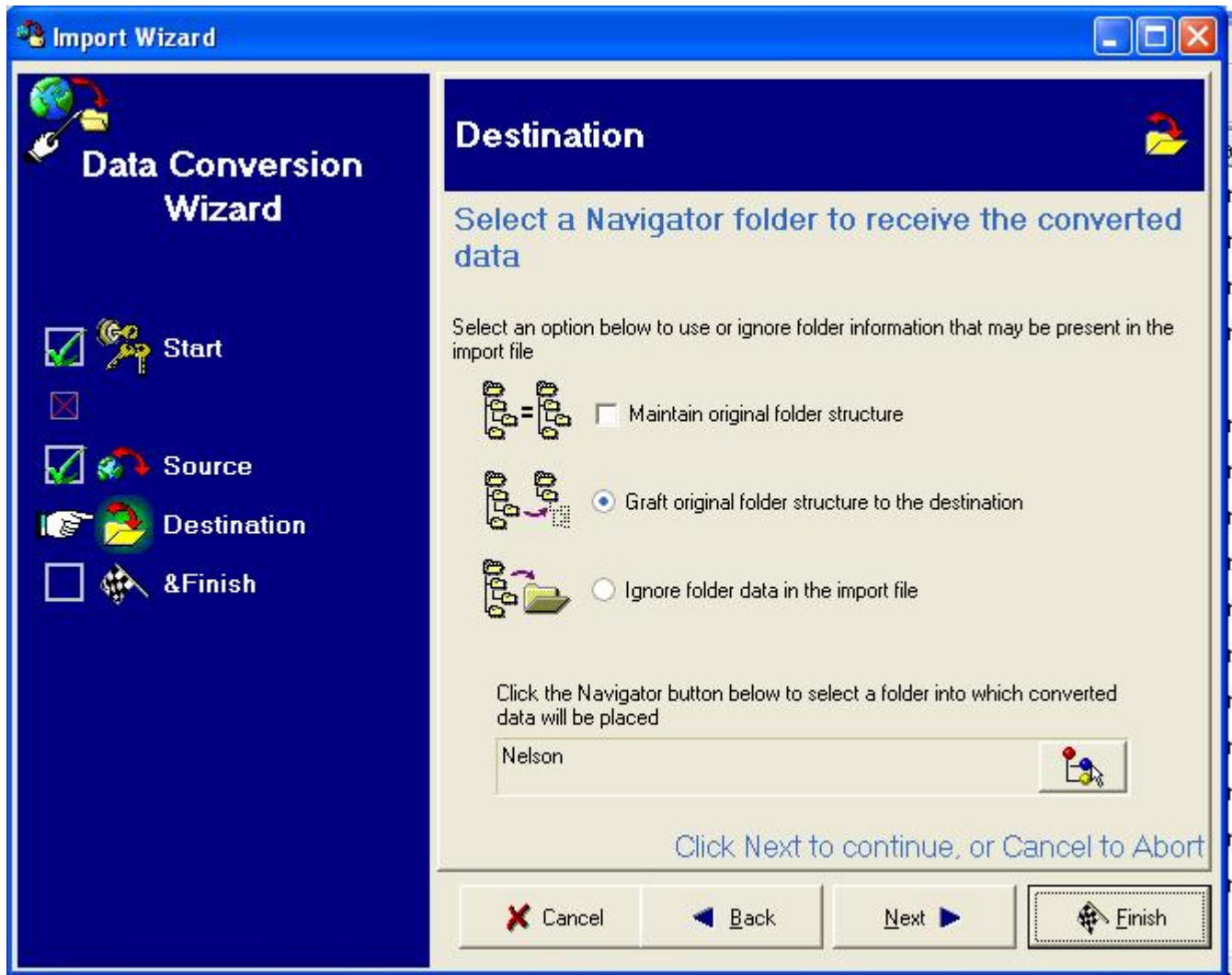
The wizard's **second step** requires the user to locate an XML export file using a standard MS Windows open/browse dialog.

Once this is done, click "Next"

If the XML file contains formulas or samples, the next step involves selecting a Data Navigator folder to receive the imported data.

Colorant Sets are not stored in folders so this step is automatically omitted by the wizard.

Folder selection includes an option for setting the correspondence between the folder structures of the exporting and importing systems.



Options are:

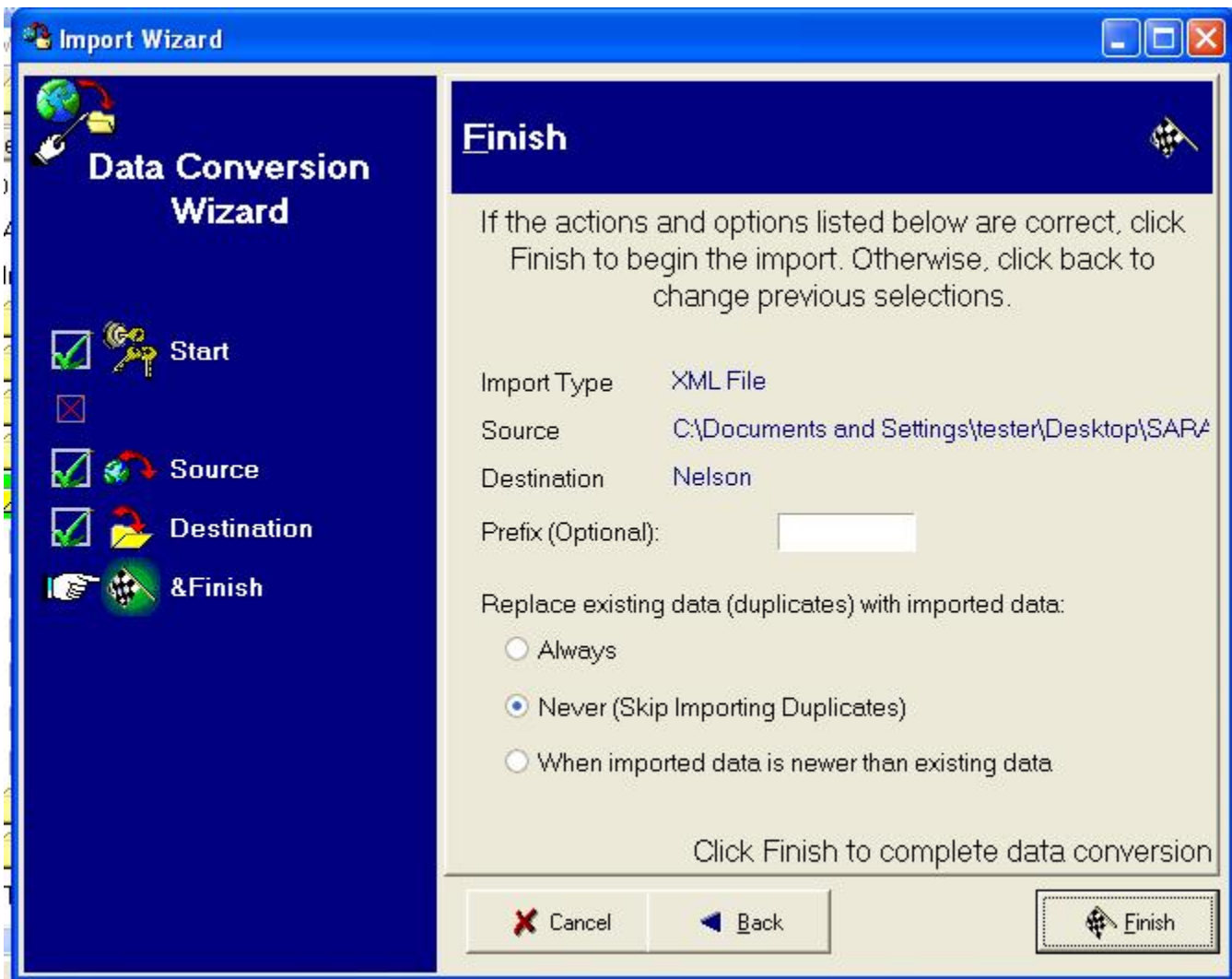
Maintain original folder structure: Place data in the same folders as on the source system. If those folders do not exist, create them

Graft original folder structure to the destination: Similar to a 'mount point' place data in folders of the same name as the source system – but under a different parent. If the folders do not exist on the destination system, they will be created automatically.

Ignore folder data in the import file: Place all of the data items into the destination folder without regard for their original arrangement in folders. No new folders will be created.

Once these selections are made, press the button, "Next" to continue

The **final step** lets the user review selections, determine how duplicate-named data items are to be handled and, optionally, add a short prefix to the name of each data item imported.



The buttons, "Back" and "Cancel," are available should the user wish to return to a previous step or abort the export process entirely.

Upon clicking "Finish" the system will read the source XML file and write its data contents to the current database.

Cautions:

Be patient: Writing some types of data can be time consuming. Be sure no other processes or programs are accessing the database at the same time and do not power off the PC during the import.

After importing data it is a good idea to examine and review the data. XML is a plain text format, easily e-mailed and copied, but plain text is also easily truncated or corrupted.