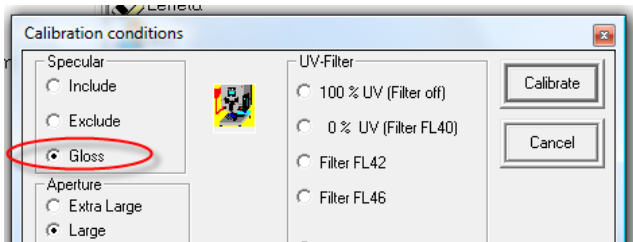


Gloss Compensation in Datacolor Match Pigment 2.1

Gloss compensation should be used to compensate for Gloss Differences between the product and the target to be matched.

Applying Gloss Compensation may result in Color Differences between target and trial when measuring with the Specular Included measurement setting.

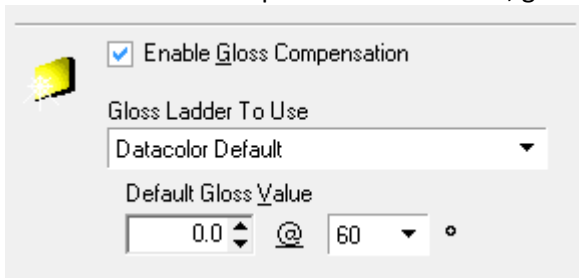
Measurements should be done with the Gloss Compensation measurement setting:



If you do not use gloss compensation, you need to use the Specular Included measurement setting.

General settings

- Make sure Gloss Compensation is enabled, go to Admin, System Details, Industry



If necessary enter a default value and the default Gloss Geometry (20, 60 or 85 degrees)
This is only a default and can be changed during formulation.

Product Line Maintenance settings

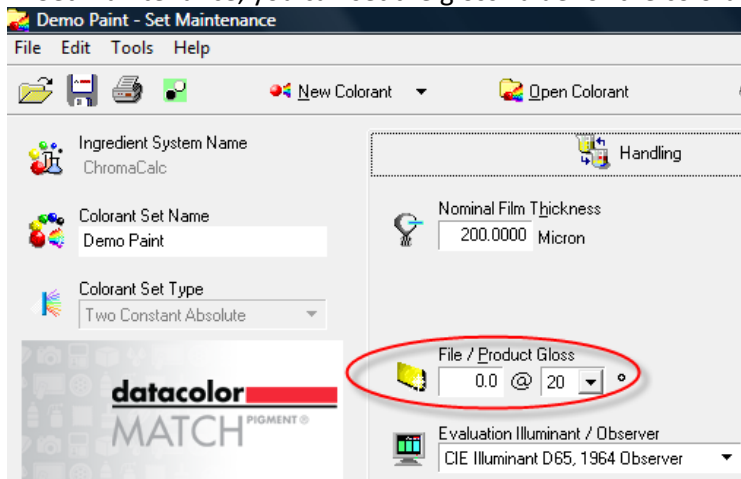
- When working with a Product Line you need to enter the average gloss value and geometry for each base

Bases						
	Colorant Set	Base Colorant	Gloss Value	Gloss Geometry	Topoff Type	
	Demo Paint	Deep Base	55.0	60	Automatic	
	Demo Paint	Medium Base	56.0	60	Correctio...	
▶	Demo Paint	Pastel Base	40.0	60	Correctio...	
	Demo Paint	Transparent Base	60.0	60	Automatic	

Colorant Set Settings

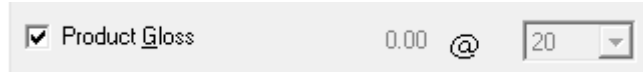
- If you are NOT working with Product Line Maintenance, the matching program will use the Colorant Set settings.
When working with Product Lines the gloss value of the colorant set will be ignored.

In Set maintenance, you can set the gloss value for the colorant set:



Formula Central Settings

In Formula Central you need to add Gloss Compensation to the Job Template, you can do this by going to the Job Preference settings, Appearance and enabling Product Gloss



Also enable Gloss compensation at the bottom left side of the screen by clicking on the gloss icon:



= Gloss Compensation disabled



= Gloss Compensation enabled

These settings can be saved in the Job Template

Gloss compensation will only be used when there is a gloss value for the target and a value for the product (base or colorant set)

When one of these values = 0, gloss compensation will not be used.

The target gloss value can be measured (using gloss as measurement condition) or can be entered manually in the following part of the formula central screen:



When you measure using gloss this value will be automatically entered in above box