

Wal-Mart Process for Datacolor TOOLS 2.0

This document contains instructions for use of custom Wal-Mart templates in Datacolor TOOLS 2.0. The user should familiarize themselves with Datacolor TOOLS 2.0 prior to using these instructions. Custom Wal-Mart files can be downloaded from www.datacolor.com/wmforms/downloads.

Wal-Mart color development processes require that suppliers using Datacolor TOOLS 2.0 use specific templates for sample evaluation and for entry of sample data, e.g. “Country of Origin”, “Brand Label”, etc. Users familiar with screen forms in Datacolor TOOLS 1.x will find that the process is very similar.

Datacolor TOOLS 2.0 Templates

Four templates are provided for lab dip and shade band evaluation:

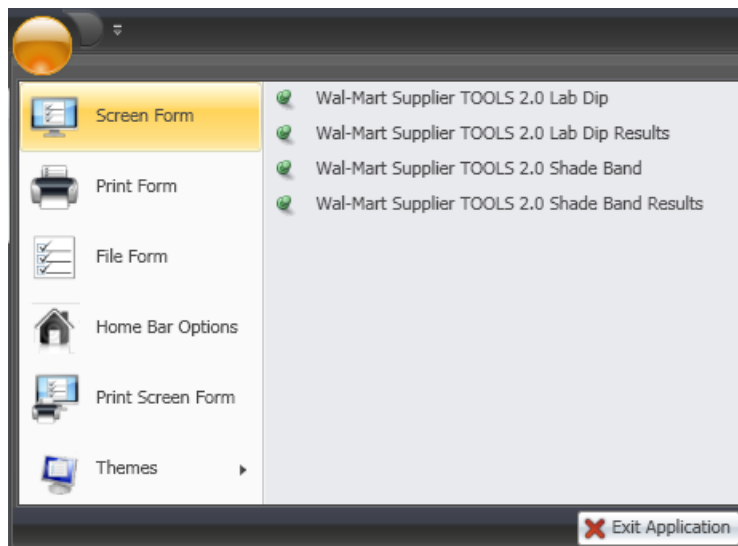
Wal-Mart Supplier TOOLS 2.0 Lab Dip: For display of lab dip color differences and entry of sample data.

Wal-Mart Supplier TOOLS 2.0 Lab Dip Results: For display of lab dip color comments provided by CTL in cases where a QTX file is provided by CTL.

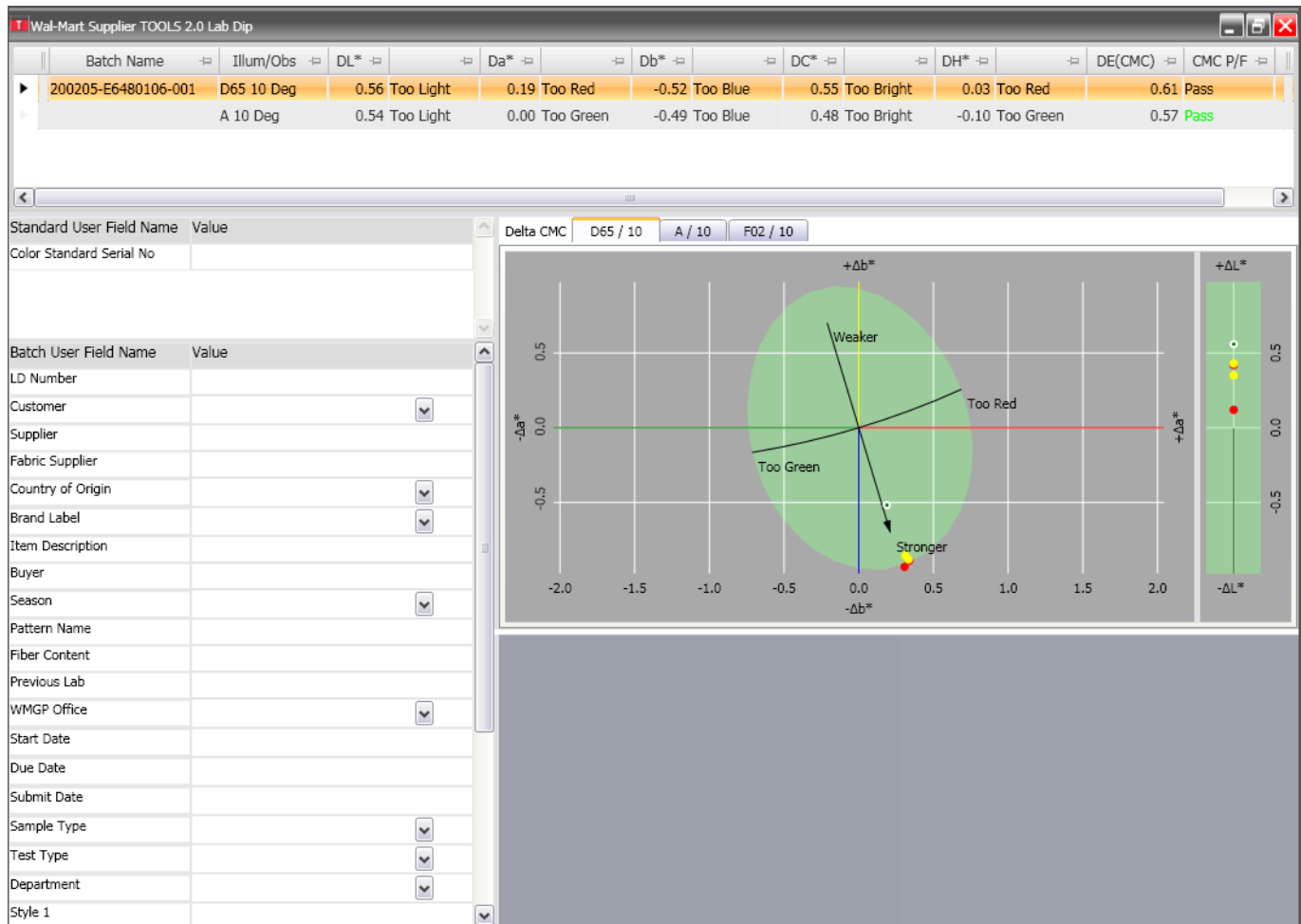
Wal-Mart Supplier TOOLS 2.0 Shade Band: For display of shade band color differences and entry of sample data.

Wal-Mart Supplier TOOLS 2.0 Shade Band Results: For display of shade band color comments provided by CTL in cases where a QTX file is provided by CTL.

These and other screen forms may be selected from the screen form list, accessed by clicking on the menu button and then selecting “Screen Form” from the menu. As templates are selected, their names will remain active in the menu list (see image following) until the users logs out of Datacolor TOOLS 2.0.



Wal-Mart Supplier TOOLS 2.0 Lab Dip

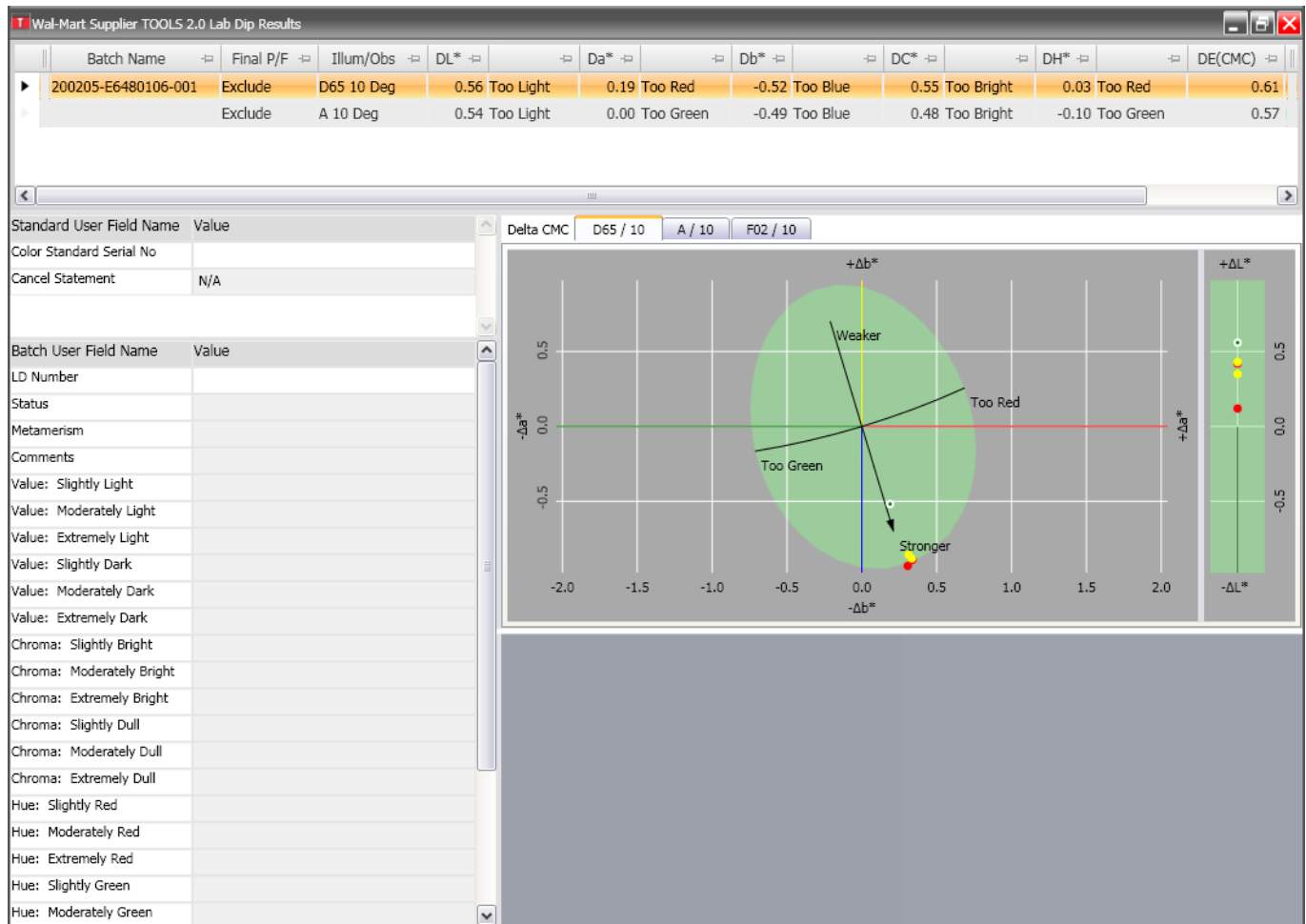


Color difference information, a color difference plot, and color representation will be automatically displayed on the template after selection of a standard and measurement of a lab dip. Prior to submitting the lab dip to CTL, the user must enter all required information into the fields displayed on the left-hand side of the screen in the “Value” column for the appropriate fields. Fields with a down arrow at the end of the field contain list boxes, which are accessed by clicking on the down-arrow button. Clicking in a date field will automatically display a down-arrow that when clicked gives access to a calendar for selection of a date. Scroll down the list to access other buttons, or double-click in the field window to temporarily expand that section of the template.

After entry of all information, the user must click the “Update Bat” icon located on the “Bat” ribbon menu. Note that the user may choose to add the “Update Bat” icon to the home menu for easier access to this function. If the user enters or modifies the value for “Color Standard Serial No” then they must click the “Update Std” icon located on the “Std” ribbon menu.

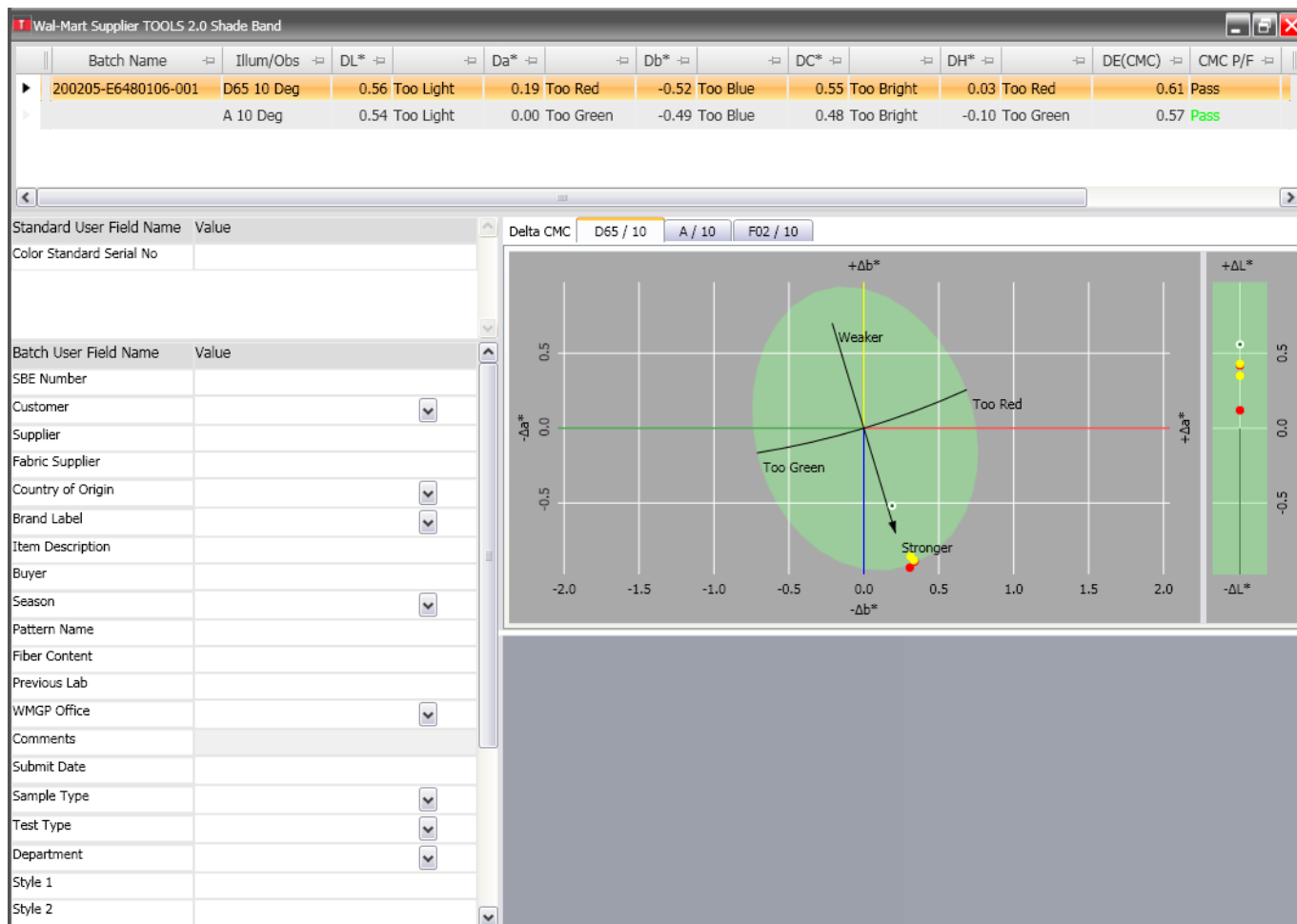
Submit the lab dips to CTL according to Wal-Mart lab dip submission guidelines. Various forms are available in the “Print Forms” list for printing lab dip information.

Wal-Mart Supplier TOOLS 2.0 Lab Dip Results



If a QTX file with lab dip comments is provided to the supplier by CTL, the comments and decision may be viewed using this form. Comments and decisions from CTL cannot be modified, as indicated by the gray background color of the fields in the “Value” list for the sample. Various forms are available in the “Print Forms” list for printing lab dip information.

Wal-Mart Supplier TOOLS 2.0 Shade Band

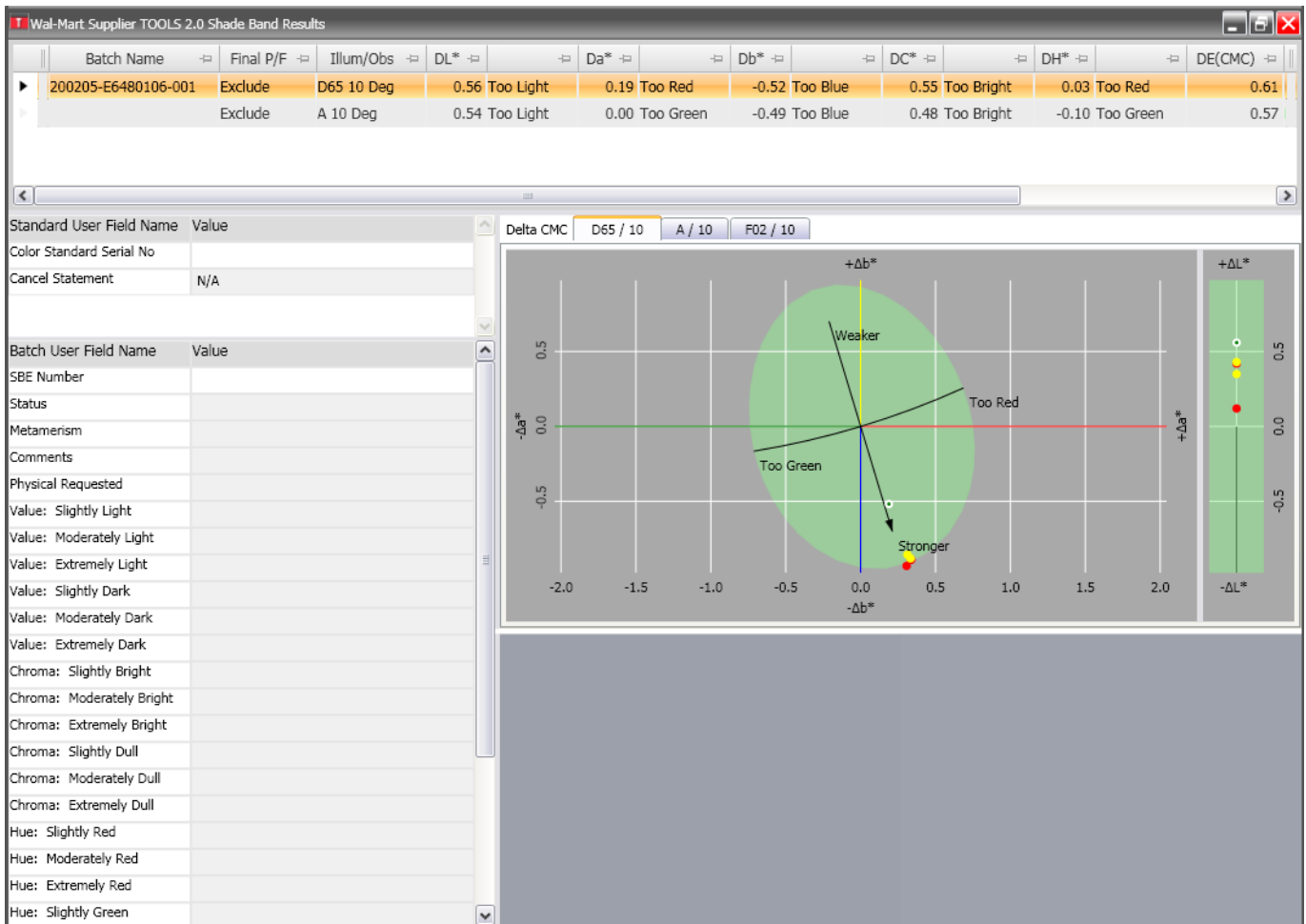


Color difference information, a color difference plot, and color representation will be automatically displayed on the template after selection of a standard and measurement of a shade band. Prior to submitting the shade band to CTL, the user must enter all required information into the fields displayed on the left-hand side of the screen in the “Value” column for the appropriate fields. Fields with a down arrow at the end of the field contain list boxes, which are accessed by clicking on the down-arrow button. Clicking in a date field will automatically display a down-arrow that when clicked gives access to a calendar for selection of a date. Scroll down the list to access other buttons, or double-click in the field window to temporarily expand that section of the template.

After entry of all information, the user must click the “Update Bat” icon located on the “Bat” ribbon menu. Note that the user may choose to add the “Update Bat” icon to the home menu for easier access to this function. If the user enters or modifies the value for “Color Standard Serial No” then they must click the “Update Std” icon located on the “Std” ribbon menu.

Submit the shade bands to CTL according to Wal-Mart shade band submission guidelines. Various forms are available in the “Print Forms” list for printing shade band information.

Wal-Mart Supplier TOOLS 2.0 Shade Band Results

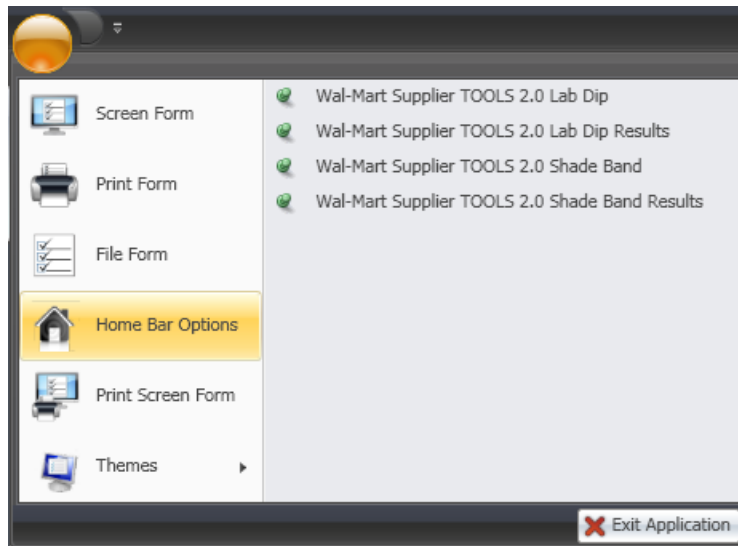


If a QTX file with shade band comments is provided to the supplier by CTL, the comments and decision may be viewed using this form. Comments and decisions from CTL cannot be modified, as indicated by the gray background color of the fields in the “Value” list for the sample. Various forms are available in the “Print Forms” list for printing shade band information.

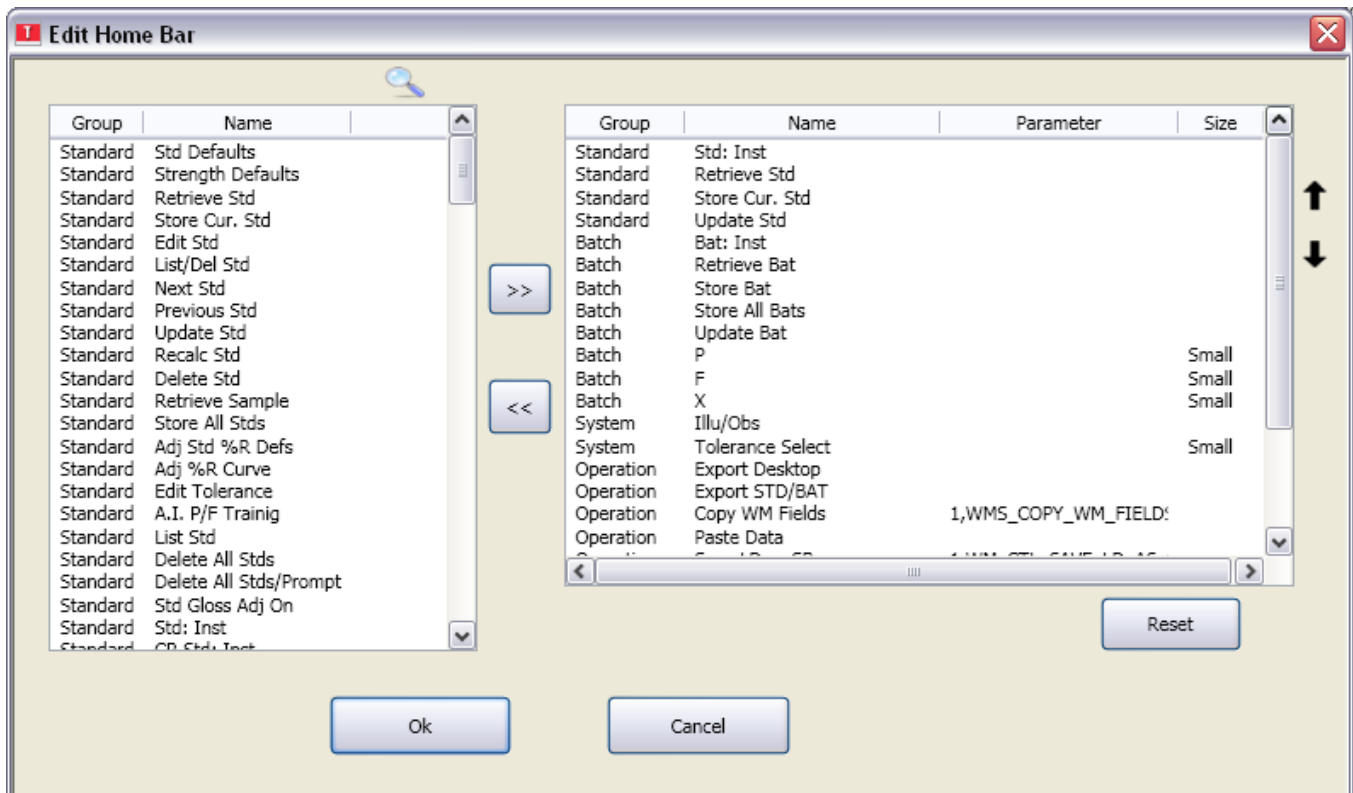
Adding “Copy” and “Paste” Functions to the Home Bar

When multiple lab dips or shade bands are to be measured, the user will find it helpful to be able to copy values from one sample and paste them into the fields of another sample. This eliminates the need to manually reenter information for multiple samples. To add icons for copying and pasting information, follows these steps:

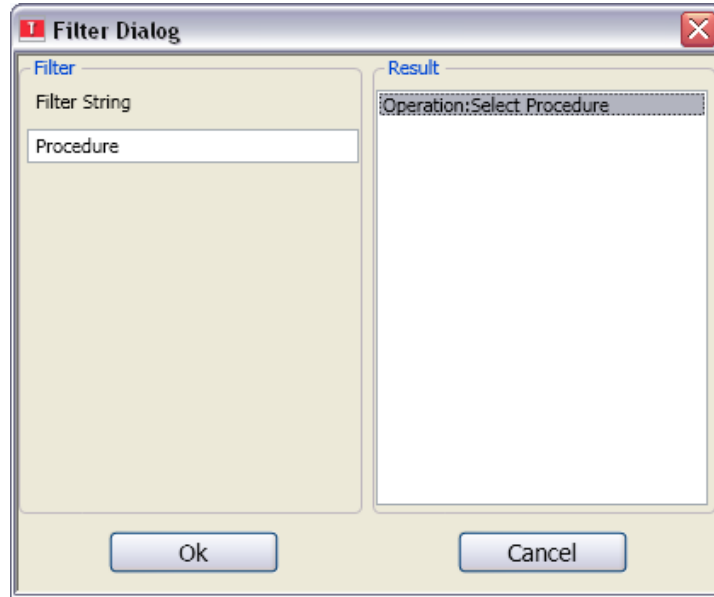
1 – Click the menu button and select “Home Bar Options”



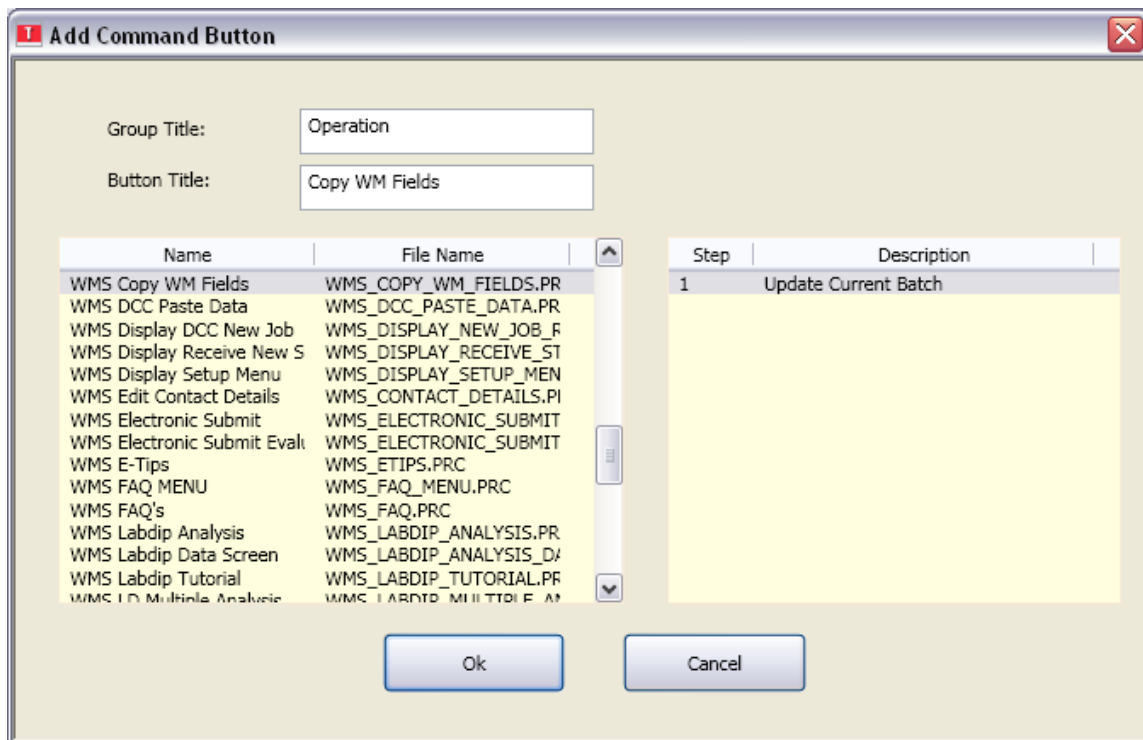
2 – Click the search icon (magnifying glass) above the list of available fields on the “Edit Home Bar” window:



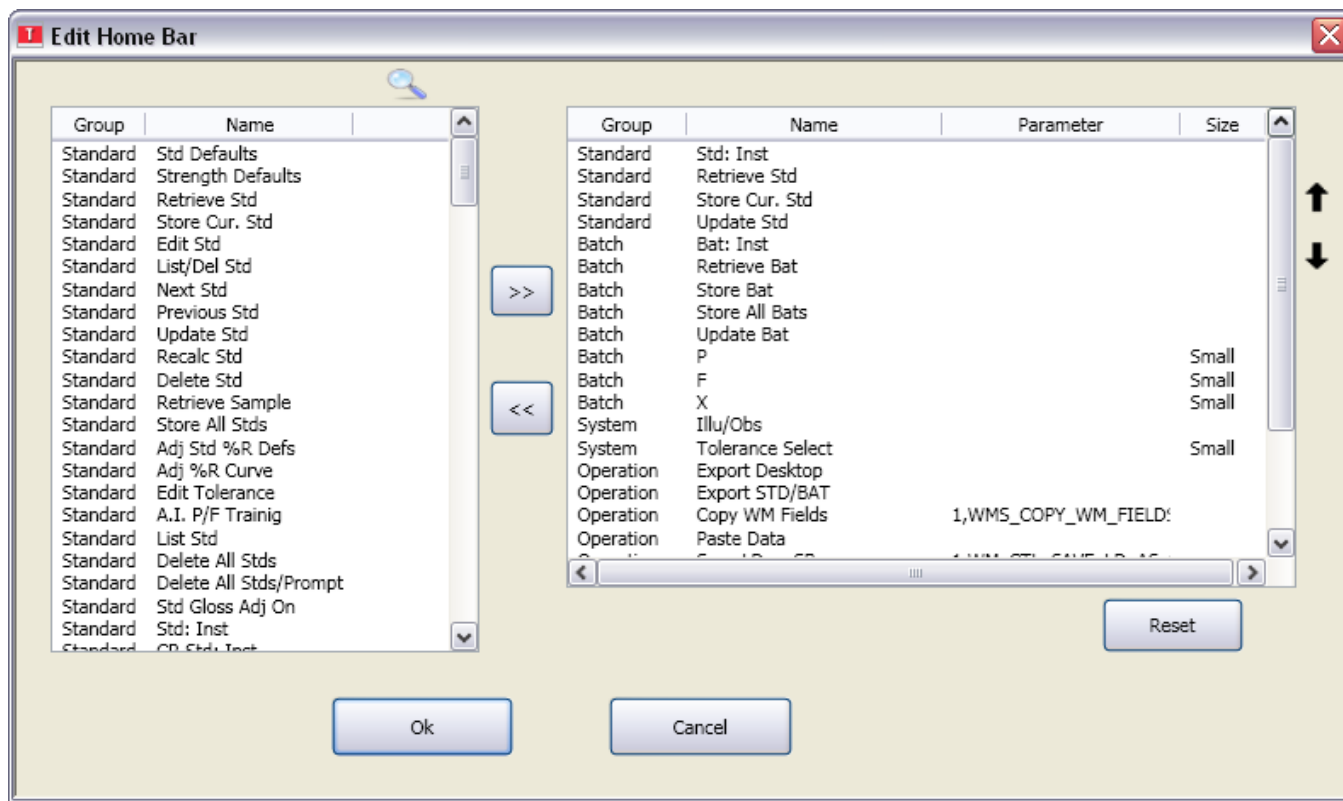
3 – In the “Filter Dialog” window, type the word ‘Procedure’ in the “Filter String” field. “Operation: Select Procedure” will be automatically displayed in the window on the right. Click “Operation: Select Procedure” so that it is highlighted and then click “OK”.



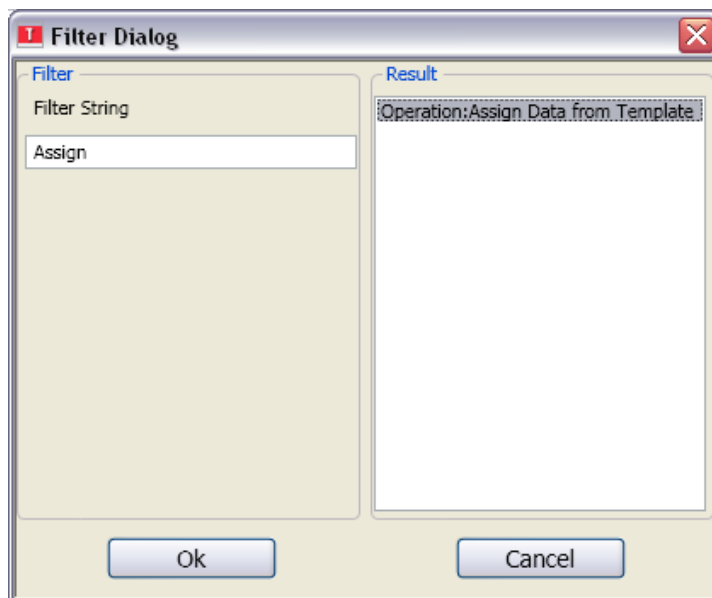
4 – Scroll down the list of available procedures in the “Add Command Button” window and click on “WMS Copy WM Fields” so that it is highlighted. On the right side of the screen, click on step 1 “Update Current Batch” so that it is highlighted. Type the text ‘Copy WM Fields’ into the “Button Title” field and then click “OK”.



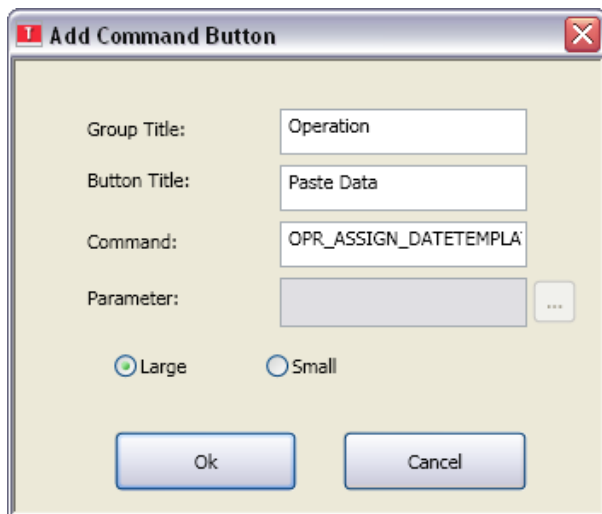
5 – Click a second time on the search icon (magnifying glass) above the list of available fields on the “Edit Home Bar” window:



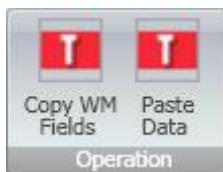
6 – In the “Filter Dialog” window, type the word ‘Assign’ in the “Filter String” field. “Operation: Assign Data from Template” will be automatically displayed in the window on the right. Click “Operation: Assign Data from Template” so that it is highlighted and then click “OK”.



7 – In the “Add Command Button” window, type the text ‘Paste Data’ into the “Button Title” field and then click “OK”.



8 – Click “OK” to close the “Edit Home Bar” window. Two new icons named “Copy WM Fields” and “Paste Data” will now be displayed in the “Operation” section of the Home Bar.



9 – The user may find it useful to add other frequently used icons to the Home Bar. Two such functions are “Update Bat” and “Update Std”, which can be added using steps 5-7 above except substituting the text ‘Update Bat’ and ‘Update Std’ to locate the desired command.

Copying and Pasting Data

To copy data values from one lab dip or shade band to another lab dip or shade band, first select the sample containing the data to be copied. Next, click the “Copy WM Fields” icon on the Home Bar. Finally, select the sample to be updated with the new information and click the “Paste Data” icon on the Home Bar. The information will now be automatically pasted into the fields of the new sample.

Submitting Lab Dips and Shade Bands to CTL

Electronic lab dips and shade bands are submitted to CTL by either Datacolor TRACK or as a QTX file attachment in an e-mail. Both functions are initiated using icons that may be added to the Home Bar.

Submit Samples Using Datacolor TRACK

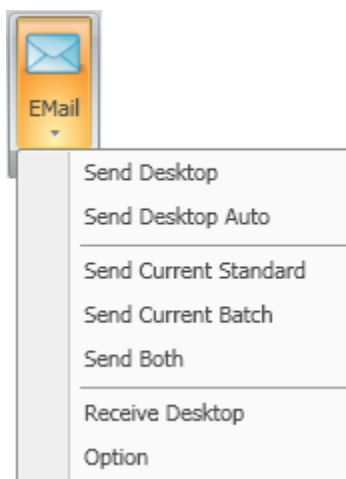
To submit samples using Datacolor TRACK, first add two icons to the Home Bar using steps 5-7 listed above. Add icons for “DCApplication: DCTrack Curr.” and “DCApplication: DCTrack Desktop”.



Click “DCTrack Curr.” to send only the current standard and its batches to Datacolor TRACK. Click “DCTrack Desktop” to send all desktop standards and batches to Datacolor TRACK. The jobs in Datacolor TRACK are then available for submission to CTL.

Submit Samples Using E-Mail

To submit samples using e-mail, use the “Email” icon located on the System ribbon menu. This icon may also be added to the Home Bar by searching for “System: EMail” in step 6 above.



Click “EMail” to display the e-mail options and then select “Send Desktop” to create an e-mail for all desktop standards and batches or select “Send Both” to create an e-mail only for the current standard and its batches. The e-mail will be automatically created with a QTX file attached, and the user must enter the correct e-mail address for CTL as well as additional details for the e-mail message.